

## 2021 Land Budget Expenditure Review

### Platte River Recovery Implementation Program

For More Information Contact: Jason Farnsworth, [farnsworthj@headwaterscorp.com](mailto:farnsworthj@headwaterscorp.com) (308) 237-5728

### *2021 Land Budget Overview By Budget Line Item*

Budget Line Item	Description	Estimated Expenditure	Actual Expenditure	% of Budget
LP-2	Adaptive Management Species Habitat Actions	\$906,553	\$559,901	62%
LP-3	New Land Acquisitions, LHIE Fees, & Property Taxes	\$1,454,650	\$3,475,271	239%
LP-4	Property Maintenance & Agricultural Operations	\$306,150	\$211,980	69%
LP-6	Land Plan Special Advisors	\$20,000	\$12,172	61%
LP-7	Public Access Management	\$40,000	\$0	0%
WPLW-1	Property Maintenance for Water Properties	\$38,400	\$27,294	71%

## 2021 Budget Overview By Complex

Complex	Estimated Expenditure	Actual Expenditure	Estimated Income	Actual Income
Non-Complex Tracts	\$304,210	\$177,472	\$24,220	\$21,415
Plum Creek "Complex"	\$45,600	\$28,219	\$12,350	\$9,637
Cottonwood Ranch Complex	\$174,589	\$135,915	\$14,135	\$10,480
Elm Creek Complex	\$36,823	\$10,186	\$17,950	\$16,457
Jerry F. Kenny Pawnee Complex	\$59,057	\$8,570	\$585	\$3,773
Fort Kearny Complex	\$66,570	\$48,511	\$37,700	\$36,882
Minden-Gibbon Complex	\$22,500	\$3,346	\$0	\$0
Clark Island Complex	\$85,059	\$39,503	\$32,290	\$40,180
Shoemaker Island Complex	\$24,795	\$2,354	\$42,595	\$44,697
Chapman Complex	\$293,500	\$317,805	\$3,640	\$1,820
Water Properties	\$38,400	\$27,294	\$9,000	\$9,125
New Acquisitions (Estimated 2)*	\$100,000	\$0	\$0	\$0
<b>Total</b>	<b>\$1,251,103</b>	<b>\$799,175</b>	<b>\$194,465</b>	<b>\$194,466</b>

\* \$50K for maintenance & \$50K for species habitat

## **2021 Budget Priority Areas by Budget Line Item**

**LP-2 – Adaptive Management Species Habitat Actions:** Species habitat priorities are focused on creation and maintenance of suitable complex and non-complex habitat for Program target species. Includes Habitat Enhancement at Tract 2020002 & Chapman Complex

**LP-3 – New Land Acquisitions:** Land acquisition priorities include identification and acquisition of lands for construction of an additional 60 acres of off-channel sand and water habitat for least tern and piping plover nesting habitat and identification and acquisition of lands that could count towards the First Increment Extension habitat land "plus up" of 1,500 acres.

**LP-4 – Property Maintenance & Agricultural Operations:** 2020 priorities include maintenance of basic land infrastructure such as facilities, roads, and fences as well as fulfilling basic ownership obligations like noxious weed control and ROW mowing.

**LP-6 – Land Plan Special Advisors:** Priorities for special advisors include administration of agricultural leases and associated FSA obligations, crop management and marketing, and assistance in cropland conversions.

**LP-7 – Public Access Management:** Nebraska Game and Parks Commission will manage public access to Program lands.

**WPLW-1 – Property Maintenance for Water Properties:** 2020 priorities include maintenance of basic land infrastructure such as facilities, roads, and fences as well as fulfilling basic ownership obligations like noxious weed control and ROW mowing.

**Property Identification Key:**

2008001 – PRRIP Wyoming Property  
2008002 - NPPD Cottonwood Ranch  
2009001 – PRRIP Fox Tract  
2009002 – PRRIP Bartels Tract  
2009003 - PRRIP Dyer Tract  
2009004 – PRRIP Hostetler Tract  
2009005 – PRRIP McCormick Tract  
2009006 - PRRIP Stall Tract  
2009007 - PRRIP Cook Tract  
2009008 - PRRIP Broadfoot Newark Tract  
2010001 - PRRIP Morse Tract  
2010002 - Broadfoot Kearney South Tract  
2010003 – PRRIP Sherrerd/Clark Easement  
2010004 – PRRIP Binfield Tract  
2011001 - PRRIP East Leaman Tract  
2011002 - PRRIP Follmer Alda Tract  
2012001 – PRRIP Sullwold Tract  
2012002 – PRRIP Johns Tract  
2012003 – PRRIP Blessing Tract  
2012004 - PRRIP DeBore Tract  
2013001 - PRRIP Liehs Tract  
2014002 - PRRIP Volentine Tract  
2015001 – PRRIP Speidell Tract  
2015002 - PRRIP BELF Tract  
2015003 – Blue Hole East  
2018001 – PRRIP Dippel Tract  
2019001 – PRRIP Robinson Tract  
2020001 – PRRIP Bergren Tract  
2020002 - PRRIP Lex Pit Tract  
2021001 - Meyers Trust Tract

W201602 – PRRIP Lindstrum Tract  
W201701 – PRRIP Edlund Tract  
W201702 - PRRIP Albrecht Tract  
W201703 - PRRIP Lakeside Tract



**PLATTE RIVER**  
RECOVERY IMPLEMENTATION PROGRAM

Page Intentionally Left Blank

Priority Area: Adaptive Management			2021 Budget	2021 Expenditure	
LP-2			Total	Total	%
	Item(s): <i>Predator Fencing</i>	Installation of 5,000 LF of Predator Fencing	\$15,000	\$30,791	205%
	<b>Priority Area: Species Habitat</b>				
	Item(s): <i>Create Least Tern &amp; Piping Plover OCSW Habitat</i>	Tract 2020002 (Lex pit) Predator Fence (1,200 LF)	\$11,500	\$9,106	79%
		Tract 2020002 (Lex pit) LT/PP OCSW Habitat Enhancement	\$250,000	\$113,275	45%
		<b>Subtotal</b>	<b>\$261,500</b>	<b>\$122,381</b>	<b>47%</b>
	Item(s): <i>Maintain Suitable In- and Off-Channel Sand &amp; Water Habitat</i>	Herbicide applications on OCSW peninsulas to maintain bare sand nesting habitat	\$19,500	\$23,519	121%
		Tract 2010002 Remove Piles, Smooth, & Dynam	\$1,000	\$0	0%
		<b>Subtotal</b>	<b>\$20,500</b>	<b>\$23,519</b>	<b>115%</b>
	Item(s): <i>Maintain Suitable Palustrine Wetland Habitat</i>	Irrigation Well Pumping	\$8,400	\$14,622	174%
		Brush, tree, cattail herbicide spraying	\$24,500	\$14,772	60%
		Prescribed Burning	\$3,010	\$0	0%
		<b>Subtotal</b>	<b>\$35,910</b>	<b>\$29,394</b>	<b>82%</b>
	Item(s): <i>Improve Target Species Sand and Water Habitat</i>	Remove Blow Sand from Predator Fences	\$10,000	\$12,910	129%
		Herbicide treatment on south bank to kill vegetation prior to disking	\$5,000	\$6,049	121%
		Disking if necessary to provide in-channel vegetation control	\$134,350	\$0	0%
		Clear Island in Main Channel	\$15,000	\$12,725	85%
		Tract 2019001 Habitat Enhancement	\$50,000	\$37,500	75%
		Tract 2020001 Habitat Enhancement	\$222,000	\$261,058	118%
		<b>Subtotal</b>	<b>\$466,350</b>	<b>\$330,242</b>	<b>71%</b>
	Item(s): <i>Whooping Crane Grassland / Wet Meadow Habitat</i>	Prescribed Burning	\$42,293	\$0	0%
		Russian olive & Tree Pile Removal	\$15,000	\$0	0%
		<b>Subtotal</b>	<b>\$57,293</b>	<b>\$0</b>	<b>0%</b>
		<b>Unplanned Expenses</b>	<b>\$0</b>	<b>\$23,574</b>	
		<b>Existing Land Subtotal</b>	<b>\$856,553</b>	<b>\$559,901</b>	
		2020 New Acquisitions	\$50,000		0%
		<b>LP-2 Budget Total</b>	<b>\$906,553</b>	<b>\$559,901</b>	<b>62%</b>

Priority Area: Land Acquisitions			2021 Budget	2021 Expenditure	
LP-3			Total	Total	%
	Item(s): <i>Land Acquisition, Property Taxes and Associated Fees</i>	Land interest holding entity (LIHE)	\$55,000	\$72,823	132%
		Property Taxes	\$163,900	\$151,398	92%
		Cottonwood Ranch Sponsorship Agreement	\$17,000	\$18,000	106%
		Land Acquisition Associated Costs	\$18,750	\$30,015	160%
		Buy, Lease or Easement (400 acres)	\$1,200,000	\$3,203,035	267%
		<b>LP-3 Budget Total</b>	<b>\$1,454,650</b>	<b>\$3,475,271</b>	<b>239%</b>

Priority Area: Operations and Maintenance			2021 Budget	2021 Expenditure	
LP-4			Total	Total	%
	Item(s): <i>Basic Property Maintenance Obligations and Needs</i>	Fence & Road Maintenance	\$43,000	\$47,018	109%
		Noxious Weed Control	\$48,500	\$44,325	91%
		Mowing	\$17,000	\$4,148	24%
		Lodge & Quonset Utilites & maintenance	\$5,600	\$5,911	106%
		Cabin Utilites & maintenance	\$2,500	\$3,370	135%
		CWR BSR Project Fence	\$111,500	\$103,305	93%
		Electricity for Livestock wells	\$3,050	\$3,903	128%
		NE Forest Service Costshare Pilot Fuel Reduction	\$25,000	\$0	0%
		Unplanned Expense	\$0	\$0	
		<b>Existing Land Subtotal</b>	<b>\$256,150</b>	<b>\$211,980</b>	
		2020 New Acquisitions	\$50,000		0%
		<b>LP-4 Budget Total</b>	<b>\$306,150</b>	<b>\$211,980</b>	<b>69%</b>

Priority Area: Water Tract Operations and Maintenance			2021 Budget	2021 Expenditure	
WPLW-1			Total	Total	%
	Item(s): <i>Basic Property Maintenance Obligations and Needs</i>	Fence & Road Maintenance	\$5,000	\$7,628	153%
		Fence Replacement	\$13,200	\$7,148	54%
		Noxious Weed Control	\$10,000	\$0	0%
		Mowing	\$1,000	\$650	65%
		Electricity for Livestock wells	\$200	\$184	92%
		Property Taxes	\$9,000	\$9,753	108%
		Unplanned Expense	\$0	\$1,931	
		WPLW-1 Budget Total	\$38,400	\$27,294	71%





**PLATTE RIVER**  
RECOVERY IMPLEMENTATION PROGRAM

Page Intentionally Left Blank

# 2021 Non-Complex Properties Annual Work Plan Report

## General Priorities

- \* **Good Neighbor Policy** - Conducted all actions in accordance with Program's good neighbor policy.

## Adaptive Management Priorities

- \* **Species Monitoring** – Monitored whooping crane use of non-complex palustrine wetlands and least tern and piping plover use and productivity at off-channel sand and water nesting sites.

## Species Habitat Priorities

- \* **Maintain Suitable Off-Channel Sand and Water Nesting Habitat** – Applied pre-emergent herbicide on Tracts 2009008, 2010002, 2011001, and 2011002 OCSW nesting habitat to prevent vegetation encroachment into nesting areas.
- \* **Maintain Suitable Palustrine Wetland Roosting Habitat** – Managed vegetation height in the palustrine wetland areas of Tracts 2012004 and 2013001 to maintain suitable unobstructed view widths for whooping crane roosting.
- \* **Protecting Other Species of Concern** – Identified presence of and determine methods to protect other species of concern during implementation of land-related activities.

## Operations and Maintenance Priorities

- \* **Basic Property Maintenance Obligations and Needs** – Fulfilled basic property ownership obligations and needs including boundary fence signage, road maintenance, and noxious weed control.
- \* **Agricultural Operations** – Oversaw crop leases on Tracts 2009008, 2012004 and 2013001 and hay lease on Tract 2011001.
- \* **Sand and Gravel Mining Operations** – Monitored sand and gravel mining operations on Tracts 2009008 and 2011002.

*NOTE: The budget section of this work plan only contains information for work items that are specific to these tracts. As such, tract-specific research and monitoring actions are presented but system-scale actions like target species and geomorphology/vegetation monitoring are not.*

**Priority Area: *General*****Item(s):** *Land Interest and Tract-Level Restoration and Maintenance Planning*

No.	Management Activities	Budget Line Item	Completed	Cost (Estimated)	Cost (Actual)
NC 1	Coordination of Program land actions with neighboring landowners	N/A	Yes	N/A	N/A
NC 2	Tract 2020002 Restoration and Management Plan Development	N/A	Yes	N/A	N/A

**Priority Area: *Aaptive Manangement*****Item(s):** *Turtle Fencing*

No.	Management Activities	Budget Line Item	Completed	Cost (Estimated)	Cost (Actual)
NC 3	Tract 2020002-Installation of 5,000 LF of Predator Fencing	LP-2	Yes	\$15,000	\$30,791

**Priority Area: *Species Habitat*****Item(s):** *Create Least Tern & Piping Plover OCSW Habitat*

No.	Management Activities	Budget Line Item	Completed	Cost (Estimated)	Cost (Actual)
NC 4	Tract 2020002 (Lex pit) Permanet & Temporary Predator Fence (1,200 LF)	LP-2	Yes	\$11,500	\$9,106
NC 5	Tract 2020002 (Lex pit) LT/PP OCSW Habitat Enhancement	LP-2	Yes	\$250,000	\$113,275

**Priority Area: *Species Habitat*****Item(s):** *Maintain Suitable In- and Off-Channel Sand & Water Habitat*

No.	Management Activities	Budget Line Item	Completed	Cost (Estimated)	Cost (Actual)
NC 6	Herbicide applications on OCSW peninsulas to maintain bare sand nesting habitat	LP-2	Yes	\$11,000	\$15,289
NC 7	Tract 2010002 Remove Piles, Smooth & Dynamite	LP-2	No	\$1,000	\$0

**Priority Area: *Species Habitat*****Item(s):** *Maintain Suitable Palustrine Wetland Habitat*

No.	Management Activities	Budget Line Item	Completed	Cost (Estimated)	Cost (Actual)
NC 8	Irrigation well pumping to augment water level in wetland area of Tract 2013001	LP-2	Yes	\$3,000	\$2,946
NC 9	Tract 2012004 Prescribed burn (70 ac)	LP-2	No	\$3,010	\$0
NC 10	Brush, tree, cattail herbicide spraying	LP-2	Yes	\$3,500	\$1,924

**Priority Area: *Species Habitat*****Item(s):** *Other Species of Concern*

No.	Management Activities	Budget Line Item	Completed	Cost (Estimated)	Cost (Actual)
NC 11	Habitat and species surveys on properties where work will occur	N/A	Yes	N/A	N/A
NC 12	Coordination with USFWS and NGPC to identify and mitigate potential impacts associated with land activities	N/A	Yes	N/A	N/A

**Priority Area: Operations and Maintenance****Item(s):** *Basic Property Maintenance Obligations and Needs*

No.	Management Activities	Budget Line Item	Completed	Cost (Estimated)	Cost (Actual)
NC 13	Fence and road maintenance	LP-4	No	\$1,500	\$0
NC 14	Noxious weed control	LP-4	Yes	\$2,000	\$2,801
NC 15	Mowing	LP-4	No	\$1,500	\$0
NC 16	Tract 2012004 Electricity	LP-4	Yes	\$1,200	\$1,340

**Priority Area: Operations and Maintenance****Item(s):** *Agricultural Operations*

No.	Management Activities	Budget Line Item	Completed	Cost (Estimated)	Cost (Actual)
NC 17	Oversight of grazing and cropland	N/A	Yes	N/A	N/A
NC 18	Oversight of sand and gravel mining	N/A	Yes	N/A	N/A

**Priority Area: *Unplanned Expenses***

2011002	Irrigation Pump Replacement	Basic Property	LP-4	\$8,457
2013001	Irrigation Pump Repair	Basic Property	LP-4	\$518

## 2021 Non-Complex Tracts Budget Summary

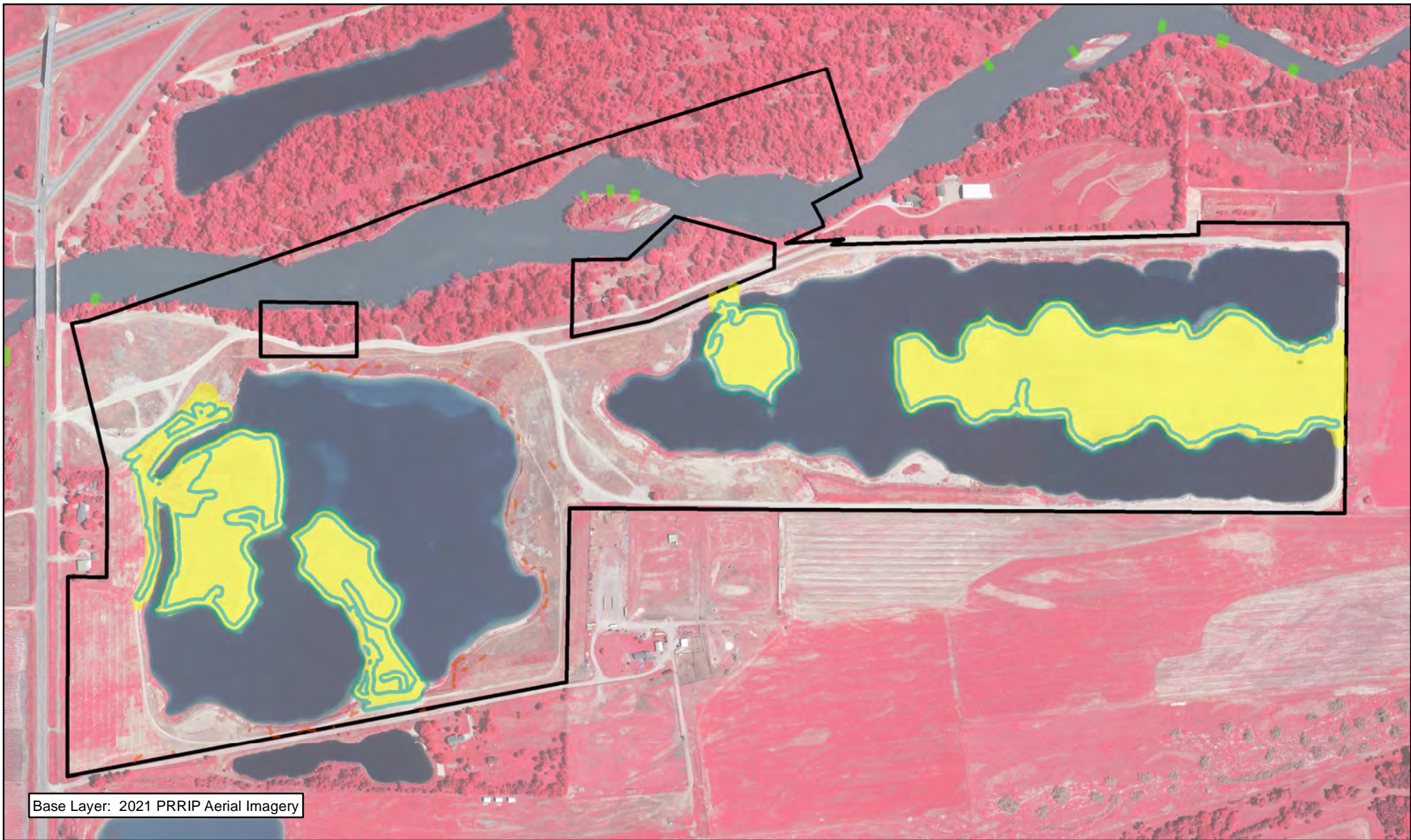
### 2021 Expenditures by Program Budget Line Item

Priority Area	Item	Budget Line Item	Estimated Expenditure	Actual Expenditure
Adaptive Management	Predator Fencing	LP-2	\$15,000	\$30,791
Species Habitat	Create Least Tern & Piping Plover OCSW Habitat	LP-2	\$261,500	\$122,381
Species Habitat	Maintain Off-Channel Sand & Water Habitat	LP-2	\$12,000	\$15,289
Species Habitat	Create & Maintain Palustrine Wetland Habitat	LP-2	\$9,510	\$4,870
		<b>Subtotal</b>	<b>\$298,010</b>	<b>\$173,331</b>

Operations and Maintenance	Property Maintenance and Agricultural Operations	LP-4	\$6,200	\$4,141
	Unplanned Expense	LP-4	0	\$8,975
		<b>Total</b>	<b>\$304,210</b>	<b>\$177,472</b>

### 2021 Revenues

Tract	Item	Estimated Income	Actual Income
Tract 2009008	Hay Income	\$400	\$750
Tract 2011001	Hay Income	\$500	\$775
Tract 2011002	Sand & Gravel Royalties	\$5,000	\$0
Tract 2011002	Cropland Cash Rent Income	\$3,060	\$2,160
Tract 2012004	Cropland Cash Rent Income	\$3,000	\$3,600
Tract 2012004	Grazing Income	\$2,000	\$3,150
Tract 2013001	Irr. Cropland Cash Rent Income	\$6,600	\$7,260
Tract 2013001	Dry Cropland Cash Rent Income	\$3,660	\$3,720
<b>Total</b>		<b>\$24,220</b>	<b>\$21,415</b>







Base Layer: 2021 PRRIP Aerial Imagery



PLATTE RIVER  
RECOVERY IMPLEMENTATION PROGRAM

### Legend

-  PVWMA Phrag Control
-  Brush Control
-  Herbicide
-  Preemergent



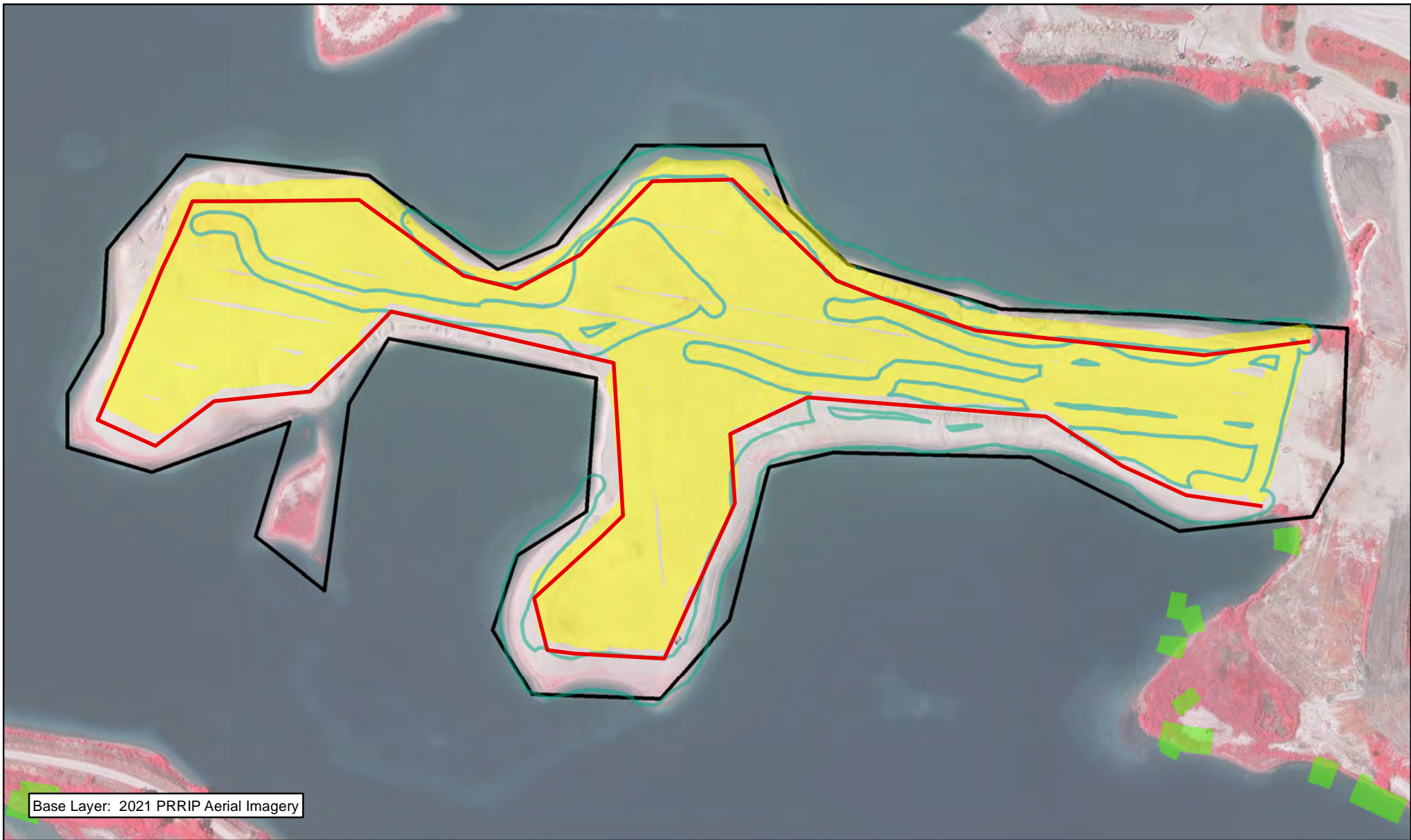
0.5 Miles

NON-COMPLEX  
TRACT 2009008  
FY 2021 ACTIVITIES

Date: 02/04/2022  
By: TRT

Figure 1





Base Layer: 2021 PRRIP Aerial Imagery



## Legend

- Predator Fence Construction
- PVWMA Phrag Control
- Herbicide
- Preemergent



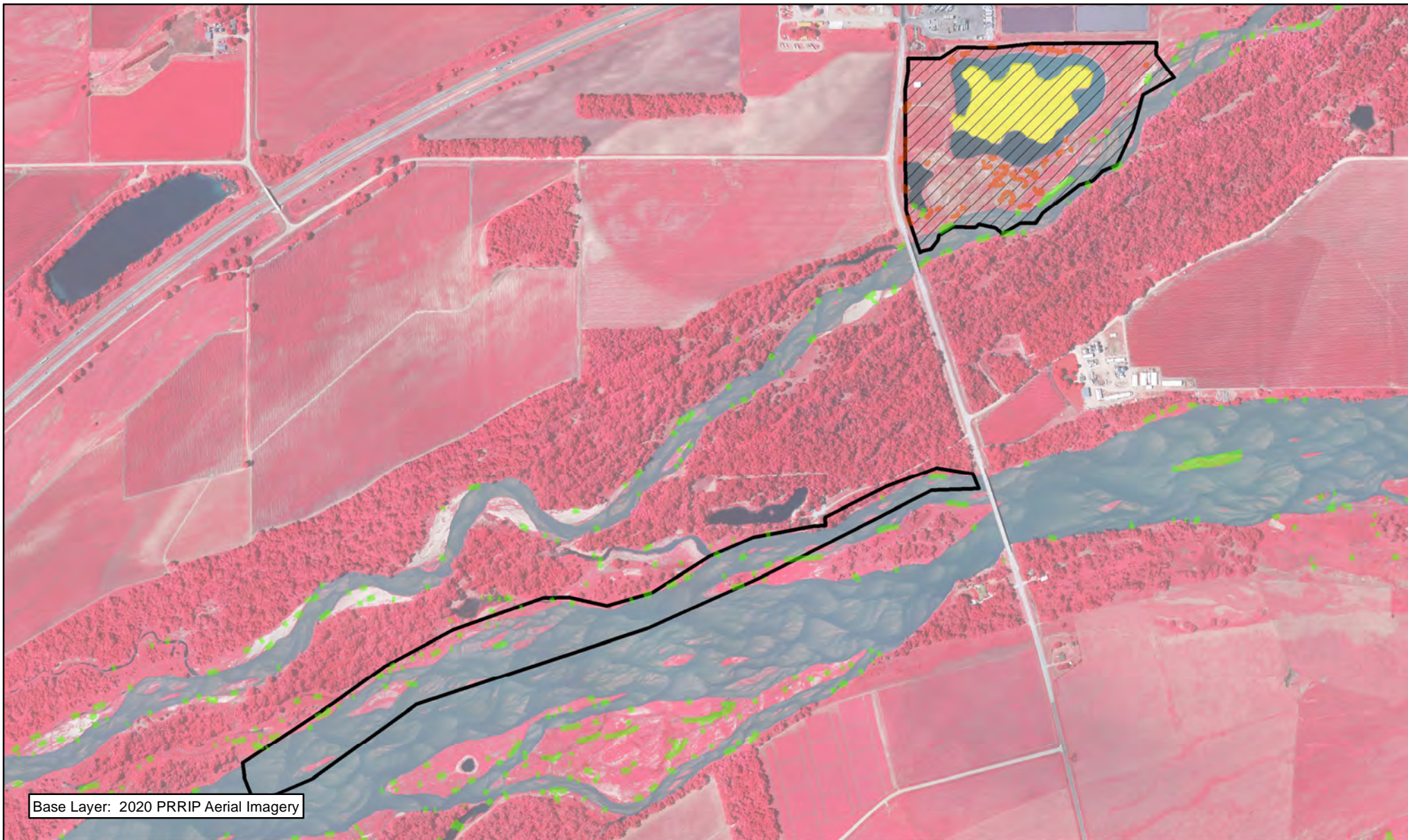
0.1 Miles

NON-COMPLEX  
TRACT 2010002  
FY 2021 ACTIVITIES






Date: 02/04/2022  
By: TRT

Figure 2






### Legend

-  Noxious Weed Control
-  Brush Control
-  Herbicide
-  PVWMA Phrag Control
-  Preemergent



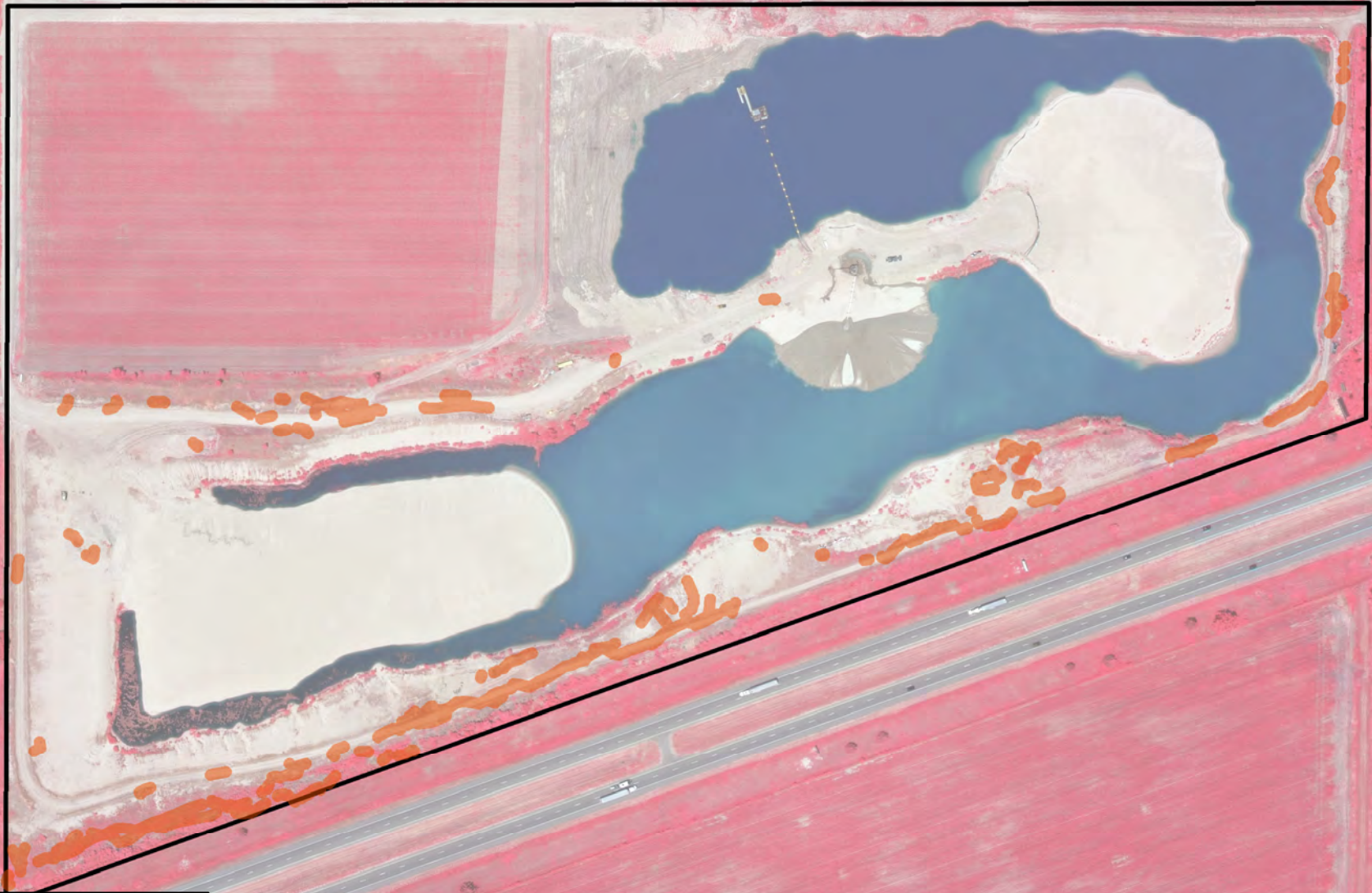
 Miles  
0.5

NON-COMPLEX  
TRACT 2011001  
FY 2021 ACTIVITIES

Date: 02/04/2022  
By: TRT

Figure 3





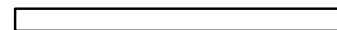
Base Layer: 2021 PRRIP Aerial Imagery



### Legend

 Brush Control



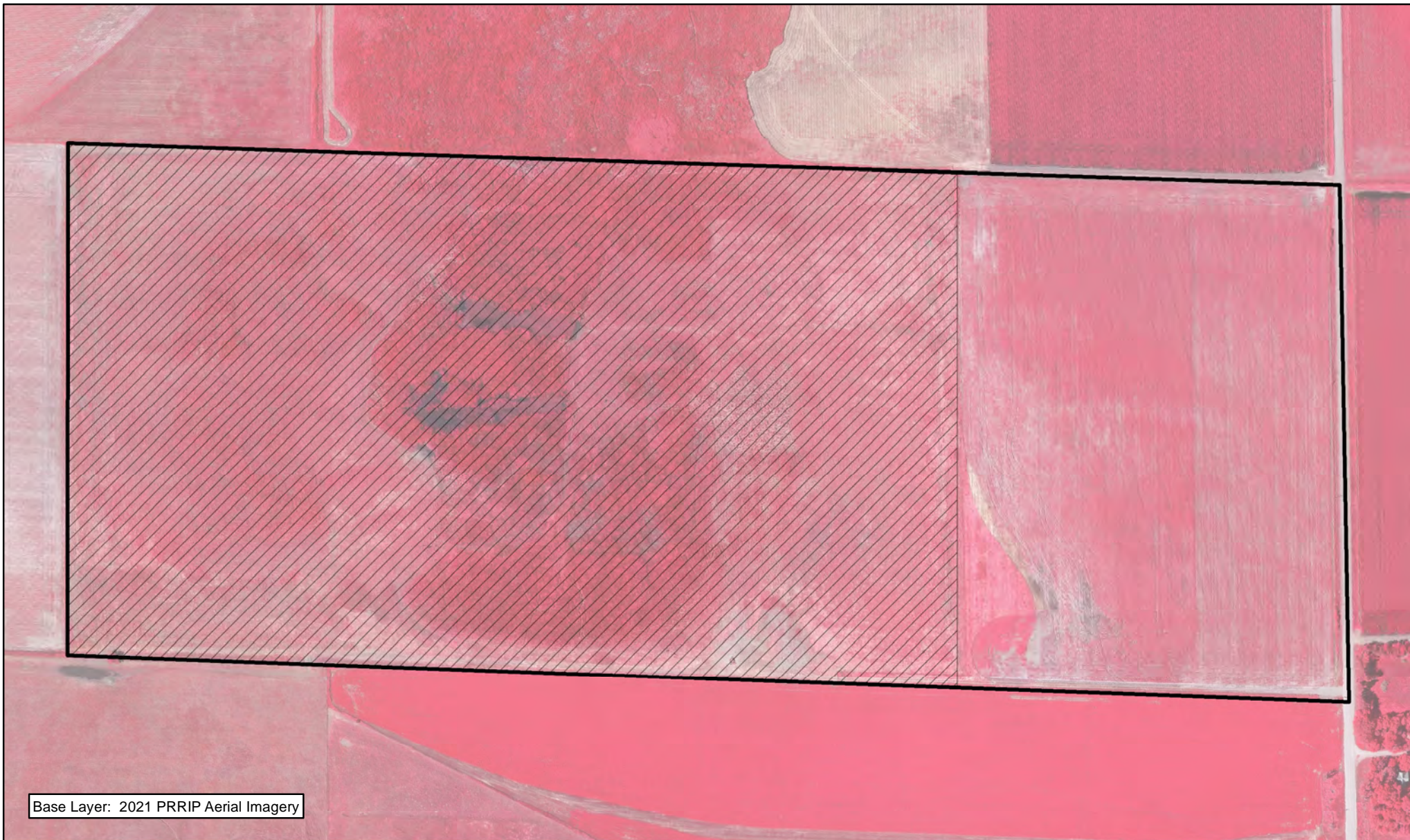
 Miles  
0.1

NON-COMPLEX  
TRACT 2011002  
FY 2021 ACTIVITIES

Date: 02/04/2022  
By: TRT

Figure 4






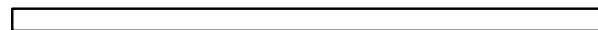
Base Layer: 2021 PRRIP Aerial Imagery



**Legend**

 Noxious Weed Control



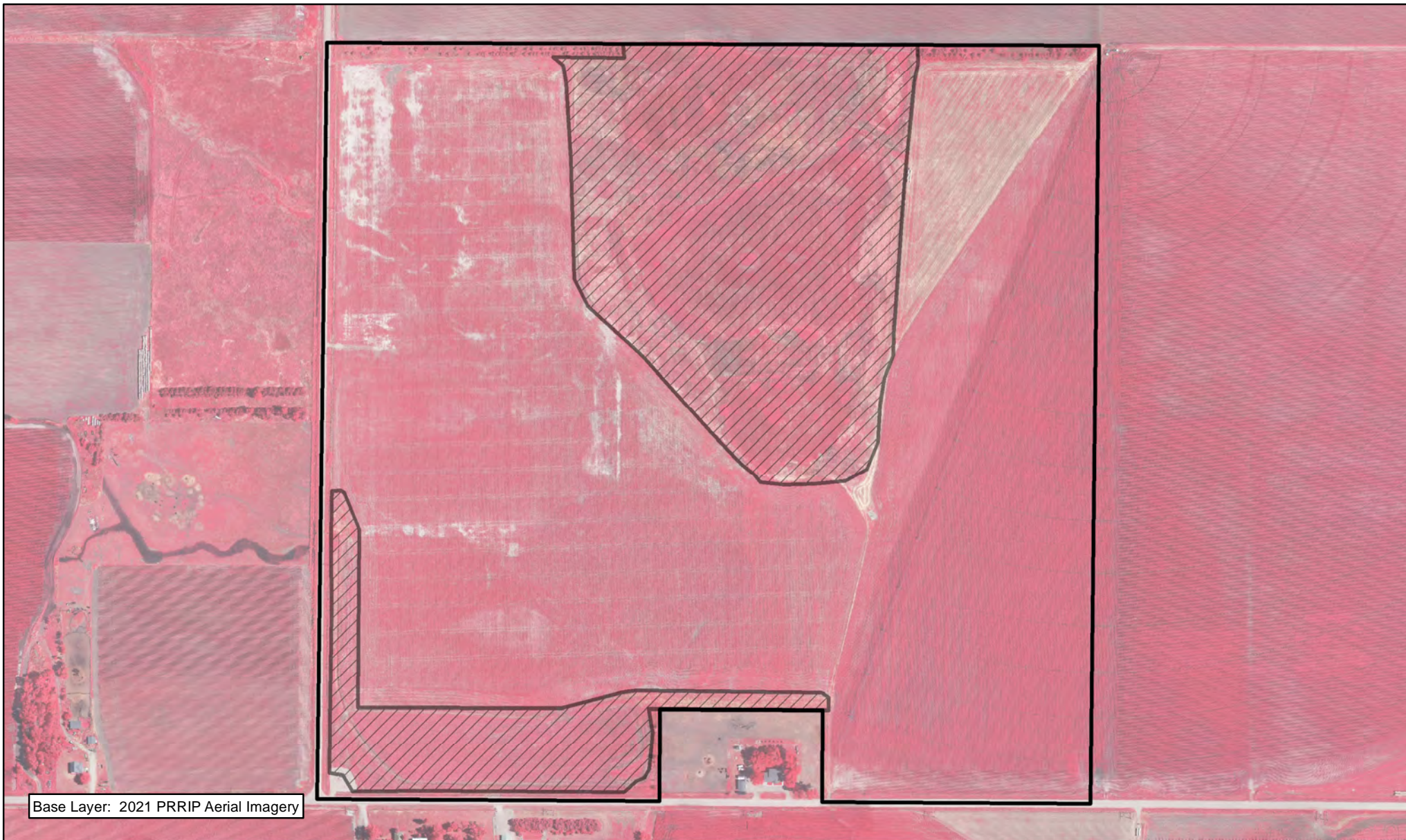
 0.2 Miles

NON-COMPLEX  
TRACT 2012004  
FY 2021 ACTIVITIES

Date: 02/04/2022  
By: TRT

Figure 5







Base Layer: 2021 PRRIP Aerial Imagery



**Legend**

 Noxious Weed Control



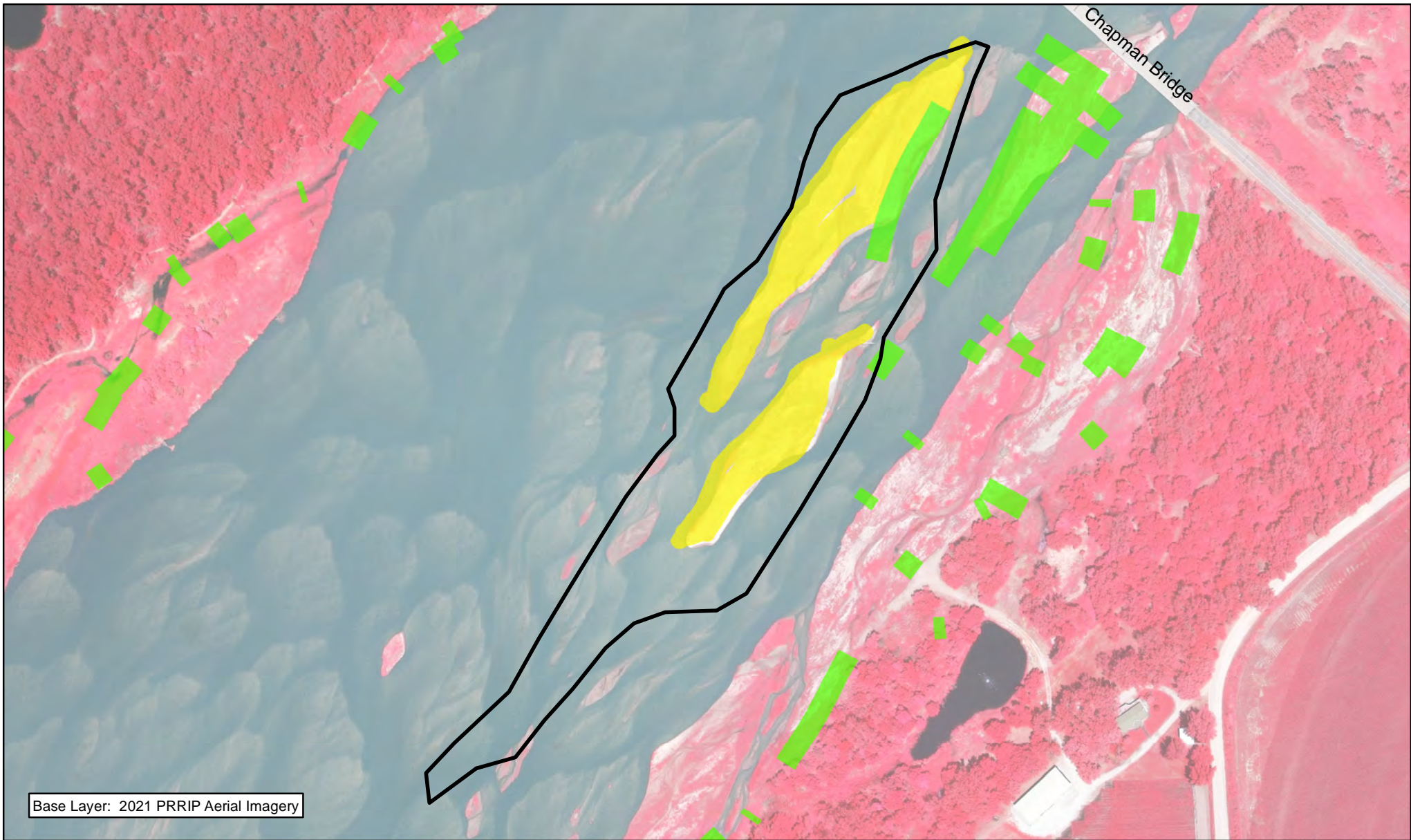
 0.2 Miles

NON-COMPLEX  
TRACT 2013001  
FY 2021 ACTIVITIES

Date: 02/04/2022  
By: TRT

Figure 6







Base Layer: 2021 PRRIP Aerial Imagery




PLATTE RIVER  
RECOVERY IMPLEMENTATION PROGRAM

**Legend**

-  PVWMA Phrag Control
-  Preemergent



 0.1 Miles

**NON-COMPLEX  
MCA ISLAND  
FY 2021 ACTIVITIES**

Date:02/04/2022  
By: TRT

**Figure 7**

## 2021 Plum Creek "Complex" Annual Work Plan Report

### General Priorities

- \* **Good Neighbor Policy** - Conducted all actions in accordance with Program's good neighbor policy.

### Adaptive Management Priorities

- \* **Implementation of full scale sediment augmentation** - Augment 60,000 cubic yards of sediment through mechanical augmentation. Augmentation occurred upstream of the Plum Creek Complex near the J-2 Return.
- \* **Species Monitoring** – Monitored whooping crane use of riverine roosting habitat and least tern and piping plover use and productivity at off-channel sand and water nesting sites.

### Species Habitat Priorities

- \* **Improve Target Species Sand and Water Habitat** – Applied pre-emergent herbicide on OCSW peninsulas to maintain tern and plover nesting habitat. Controlled in-channel vegetation to maintain suitable unobstructed view widths for whooping cranes.
- \* **Protecting Other Species of Concern** – Identified presence of and determine methods to protect other species of concern during implementation of land-related activities.

### Operations and Maintenance Priorities

- \* **Basic Property Maintenance Obligations and Needs** – Fulfilled basic property ownership obligations and needs including boundary fence signage, road maintenance, and noxious weed control.
- \* **Agricultural Operations** – Oversight of grazing lease on Tract 2009003. Oversight of cropland/hay leases on Tract 2009007.

*NOTE: The budget section of this work plan only contains information for work items that are specific to these tracts. As such, tract-specific research and monitoring actions are presented but system-scale actions like target species and geomorphology/vegetation monitoring are not.*

**Priority Area: General****Item(s):** *Complex Land Interest and Complex-Level Planning*

No.	Management Activities	Budget Line Item	Completed	Cost (Estimated)	Cost (Actual)
PC 1	Coordination of Program land actions with neighboring landowners	N/A	Yes	N/A	N/A
PC 2	Coordinate with NPPD to identify and mitigate potential impacts to leased NPPD nesting islands	N/A	Yes	N/A	N/A

**Priority Area: Species Habitat****Item(s):** *Improve Target Species Sand and Water Habitat*

No.	Management Activities	Budget Line Item	Completed	Cost (Estimated)	Cost (Actual)
PC 3	Herbicide applications on OCSW peninsulas to maintain bare sand nesting habitat	LP-2	Yes	\$5,000	\$4,381
PC 4	Remove blow sand from predator fences	LP-2	Yes	\$10,000	\$12,910
PC 5	Disking if necessary to provide in-channel vegetation control (71 ac)	LP-2	No	\$16,000	\$0

**Priority Area: Species Habitat****Item(s):** *Whooping Crane Grassland / Wet Meadow Habitat*

No.	Management Activities	Budget Line Item	Completed	Cost (Estimated)	Cost (Actual)
PC 6	No items	N/A	N/A	N/A	N/A

**Priority Area: *Species Habitat*****Item(s): *Other Species of Concern***

No.	Management Activities	Budget Line Item	Completed	Cost (Estimated)	Cost (Actual)
PC 7	Habitat and species surveys on properties where work will occur	N/A	Yes	N/A	N/A
PC 8	Coordination with USFWS and NGPC to identify and mitigate potential impacts associated with land activities	N/A	Yes	N/A	N/A

**Priority Area: Operations and Maintenance****Item(s): *Basic Property Maintenance Obligations and Needs***

No.	Management Activities	Budget Line Item	Completed	Cost (Estimated)	Cost (Actual)
PC 9	Fence and road maintenance	LP-4	Yes	\$1,500	\$114
PC 10	Noxious weed control	LP-4	Yes	\$2,500	\$2,563
PC 11	Lodge & Quonset utilities and maintenance	LP-4	Yes	\$5,600	\$5,911
PC 12	Mowing	LP-4	Yes	\$5,000	\$2,340

**Priority Area: Operations and Maintenance****Item(s): *Agricultural Operations***

No.	Management Activities	Budget Line Item	Completed	Cost (Estimated)	Cost (Actual)
PC 13	Oversight of grazing and cropland leases	N/A	Yes	N/A	N/A



## 2021 Plum Creek Complex Budget Summary

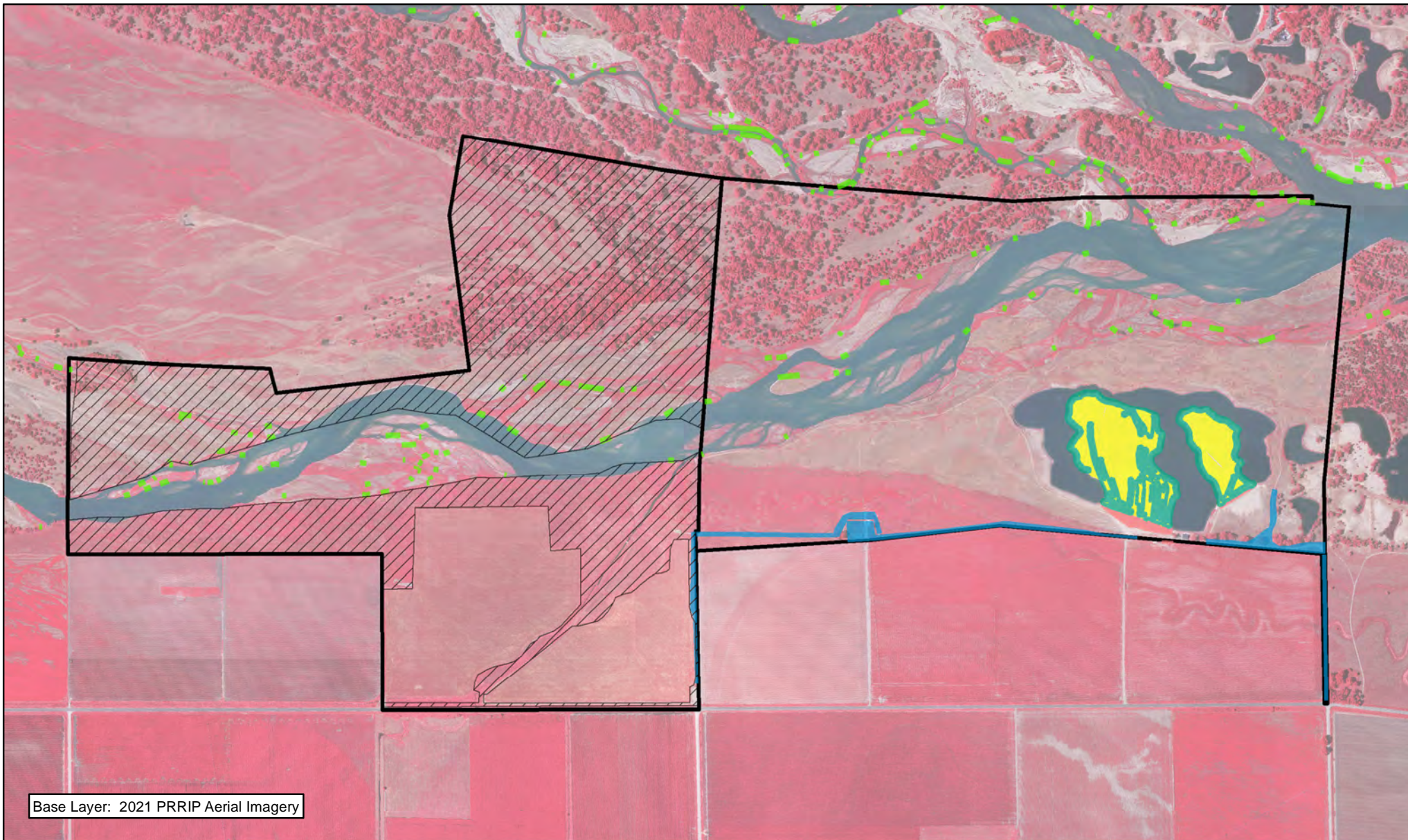
### 2021 Expenditures by Program Budget Line Item

Priority Area	Item	Budget Line Item	Estimated Expenditure	Actual Expenditure
Species Habitat	Target Species Sand and Water Habitat	LP-2	\$31,000	\$17,291
Species Habitat	Whooping Crane Wet Meadow/ Grassland Habitat	LP-2	\$0	\$0
		<b>Subtotal</b>	<b>\$31,000</b>	<b>\$17,291</b>

Operations and Maintenance	Property Maintenance and Agricultural Operations	LP-4	\$14,600	\$10,928
		<b>Total</b>	<b>\$45,600</b>	<b>\$28,219</b>

### 2021 Revenues

Tract	Item	Estimated Income	Actual Income
Tract 2009003	NPPD Habitat Lease	\$500	\$0
Tract 2009003	Grazing Income	\$3,300	\$1,650
Tract 2009007	Haying Income	\$3,000	\$1,522
Tract 2009007	Grazing Income	\$0	\$915
Tract 2009007	Cropland Income	\$5,550	\$5,550
		<b>Total</b>	<b>\$9,637</b>



### Legend

- Clear & Smooth
- PVWMA Phrag Control
- Herbicide
- Preemergent
- Shredding/Mowing
- Noxious Weed Control



0.5 Miles

### PLUM CREEK COMPLEX FY 2021 ACTIVITIES

Date: 02/04/2022  
By: TRT

Figure 8

# 2021 Cottonwood Ranch Complex Annual Work Plan Report

## General Priorities

- \* **Good Neighbor Policy** - Conducted all actions in accordance with Program's good neighbor policy.

## Adaptive Management Priorities

- \* **Species Monitoring** – Monitored whooping crane use of riverine and off-channel palustrine wetland roosting habitat and least tern and piping plover use and productivity at off-channel sand and water nesting sites.

## Species Habitat Priorities

- \* **Maintain Target Species Sand and Water Habitat** – Applied pre-emergent herbicide on OCSW peninsula to maintain tern and plover nesting habitat. Controlled in-channel vegetation to maintain suitable unobstructed view widths for whooping cranes.
- \* *Broad-Scale Recharge Water Supply and Whooping Crane Habitat Project – Operation of the broad-scale recharge project occurred in 2021 with targeted fills during the fall and spring whooping crane migrations, and during other times of excess flows in the Platte River.*
- \* *Management of grassland/wet meadow habitat for whooping cranes and sandhill cranes – Grazing continued on Lloyd Island for the 2021 grazing season. Wet meadow areas in Section 16 T8N R19W (Tracts 2008002 and 2010001) were not grazed/hayed during the 2021 due to Broad -Scale Recharge Water Supply and Whooping Crane Habitat Project construction. Grazing/haying management will resume as soon as project is complete.*
- \* **Protecting Other Species of Concern** – Identified presence of and determine methods to protect other species of concern during implementation of land-related activities.

## Operations and Maintenance Priorities

- \* **Basic Property Maintenance Obligations and Needs** – Fulfilled basic property ownership obligations and needs on Tracts 2008002, 2009006, and 2010001 including fence and road maintenance and noxious weed control.
- \* **Agricultural Operations** – Oversight of grazing/ haying leases on Tracts 2009006 and 2010001.

*NOTE: The budget section of this work plan only contains information for work items that are specific to these tracts. As such, tract-specific research and monitoring actions are presented but system-scale actions like target species and geomorphology/vegetation monitoring are not.*

### Priority Area: General

**Item(s):** *Complex Land Interest and Complex-Level Planning*

No.	Management Activities	Budget Line Item	Completed	Cost (Estimated)	Cost (Actual)
CR 1	Coordination of Program land actions with neighboring landowners	N/A	Yes	N/A	N/A

### Priority Area: Species Habitat

**Item(s):** *Improve Target Species Sand and Water Habitat*

No.	Management Activities	Budget Line Item	Completed	Cost (Estimated)	Cost (Actual)
CR 2	Tract 2008002 Pre-emergent herbicide application on plover nesting habitat and OCSW complex	LP-2	Yes	\$3,500	\$3,849
CR 3	Disking if necessary to provide in-channel vegetation control -(~50 acres)	LP-2	No	\$12,000	\$0

**Priority Area: Species Habitat****Item(s):** *Whooping Crane Grassland / Wet Meadow Habitat*

No.	Management Activities	Budget Line Item	Completed	Cost (Estimated)	Cost (Actual)
CR4	Brush, tree, cattail herbicide spraying	LP-2	Yes	\$15,000	\$9,502
CR 5	Tract 2008002 Prescribed burn (232 ac)	LP-2	No	\$9,545	\$0
CR 6	Tract 2010001 Prescribed burn (74 ac)	LP-2	No	\$3,044	\$0

**Item(s): Other Species of Concern**

No.	Management Activities	Budget Line Item	Completed	Cost (Estimated)	Cost (Actual)
CR 7	Habitat and species surveys on properties where work will occur	N/A	Yes	N/A	N/A
CR 8	Coordination with USFWS and NGPC to identify and mitigate potential impacts associated with land activities	N/A	Yes	N/A	N/A

**Priority Area: Operations and Maintenance****Item(s):** *Basic Property Maintenance Obligations and Needs*

No.	Management Activities	Budget Line Item	Completed	Cost (Estimated)	Cost (Actual)
CR 9	Broadscale Recharge Project Fence	LP-4	Yes	\$111,500	\$103,305
CR 10	Fence and road maintenance	LP-4	Yes	\$5,000	\$3,543
CR 11	Noxious weed control	LP-4	Yes	\$12,000	\$14,428
CR 12	Mowing	LP-4	No	\$2,000	\$0
CR 13	Tract 2010001 Electricity	LP-4	Yes	\$1,000	\$1,288

**Priority Area: Operations and Maintenance****Item(s):** *Agricultural Operations*

<b>No.</b>	<b>Management Activities</b>	<b>Budget Line Item</b>	<b>Completed</b>	<b>Cost (Estimated)</b>	<b>Cost (Actual)</b>
CR 14	Tract 2009006 grazing lease oversight	N/A	Yes	N/A	N/A
CR 15	Tract 2010001 grazing lease oversight	N/A	Yes	N/A	N/A
CR 16	Tract 2010001 haying lease oversight	N/A	Yes	N/A	N/A
CR 17	Tract 20008002 grazing & haying lease planning & oversight	N/A	Yes	N/A	N/A

## 2021 Cottonwood Ranch Complex Budget Summary

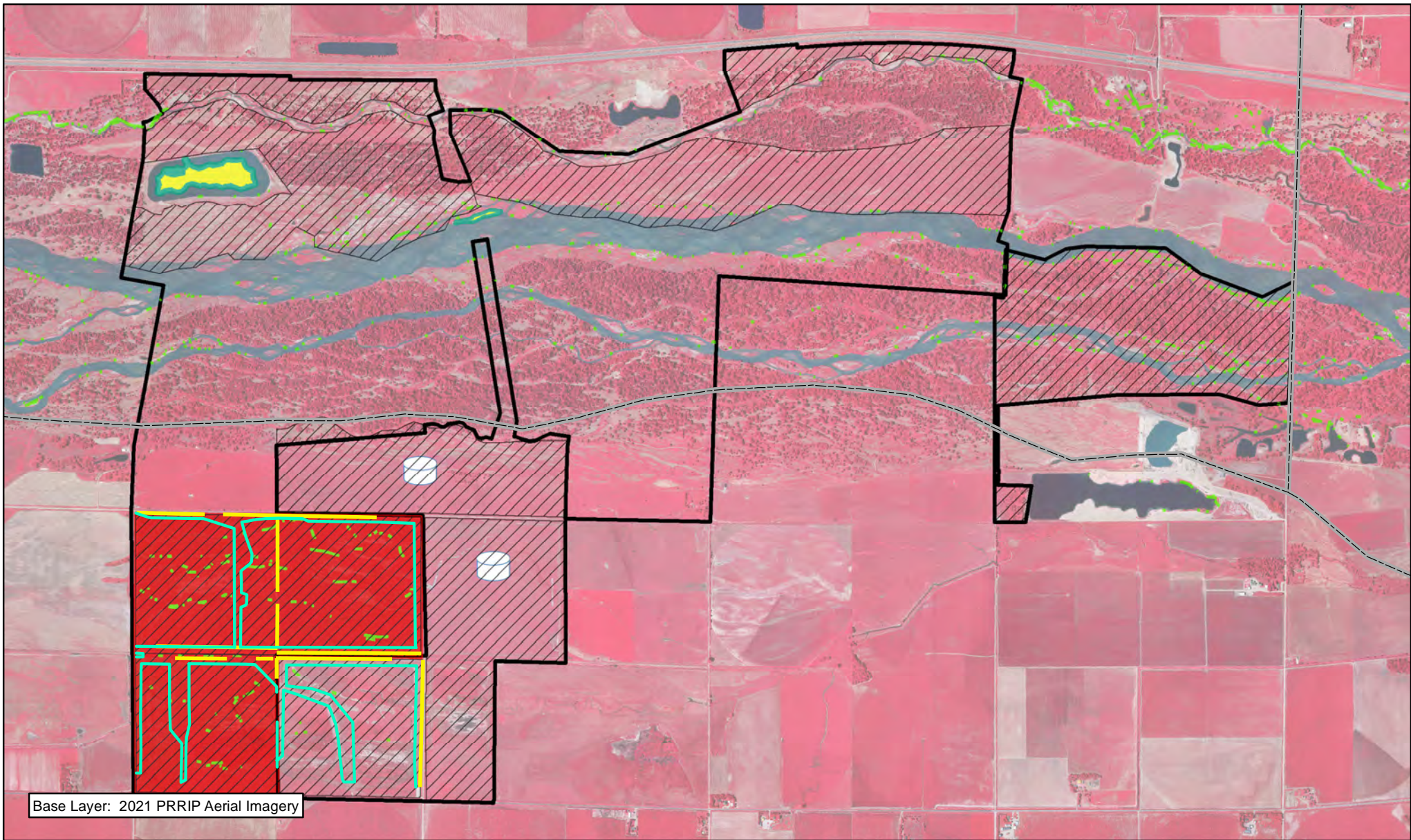
### 2021 Expenditures by Program Budget Line Item

Priority Area	Item	Budget Line Item	Estimated Expenditure	Actual Expenditure
Species Habitat	Target Species Sand and Water Habitat	LP-2	\$15,500	\$3,849
Species Habitat	Whooping Crane Wet Meadow/ Grassland Habitat	LP-2	\$27,589	\$9,502
		<b>Subtotal</b>	<b>\$43,089</b>	<b>\$13,351</b>
Operations and Maintenance	Property Maintenance and Agricultural Operations	LP-4	\$131,500	\$122,564
		<b>Total</b>	<b>\$174,589</b>	<b>\$135,915</b>

### 2021 Revenues

Tract	Item	Estimated Income	Actual Income
Tract 2009006	Grazing Income	\$2,000	\$0
Tract 2010001	Grazing Income	\$5,775	\$3,658
Tract 2010001 SE 1/4	Grazing Income	\$3,360	\$3,658
Tract 2010001	Haying Income	\$3,000	\$3,165
		<b>Total</b>	<b>\$10,480</b>





Base Layer: 2021 PRRIP Aerial Imagery



### Legend

- |                             |                      |
|-----------------------------|----------------------|
| County                      | PVWMA Phrag Control  |
| Fence Removal               | Noxious Weed Control |
| Barbwire Fence Construction | Herbicide            |
| Brush Control               | Preemergent          |
| Cattail/Phragmites Spraying | Livestock Water Tank |



1 Miles

### COTTONWOOD RANCH COMPLEX FY 2021 ACTIVITIES

Date: 02/04/2022  
By: TRT

Figure 9



# 2021 Elm Creek Complex Annual Work Plan Report

## General Priorities

- \* **Good Neighbor Policy** - Conducted all actions in accordance with Program's good neighbor policy.

## Adaptive Management Priorities

- \* **Species Monitoring** – Monitored whooping crane use of in-channel roosting habitat and least tern and piping plover use and productivity at off-channel sand and water nesting sites.

## Species Habitat Priorities

- \* **Maintain Target Species Sand and Water Habitat** – Controlled in-channel vegetation to maintain suitable unobstructed view widths for whooping cranes.
- \* **Protecting Other Species of Concern** – Identified presence of and determine methods to protect other species of concern during implementation of land-related activities.

## Operations and Maintenance Priorities

- \* **Basic Property Maintenance Obligations and Needs** – Fulfilled basic property ownership obligations and needs on Tracts 2009002, 2009005, 2012001 and 2012002 including fence and road maintenance and noxious weed control.
- \* **Agricultural Operations** – Oversight of grazing/ haying leases on Tracts 2009005, 2012001 and 2012002.

*NOTE: The budget section of this work plan only contains information for work items that are specific to these tracts. As such, tract-specific research and monitoring actions are presented but system-scale actions like target species and geomorphology/vegetation monitoring are not.*

**Priority Area: General****Item(s):** *Complex Land Interest and Complex-Level Planning*

No.	Management Activities	Budget Line Item	Completed	Cost (Estimated)	Cost (Actual)
EC 1	Coordination of Program land actions with neighboring landowners	N/A	Yes	N/A	N/A

**Priority Area: Species Habitat****Item(s):** *Improve Target Species Sand and Water Habitat*

No.	Management Activities	Budget Line Item	Completed	Cost (Estimated)	Cost (Actual)
EC 2	In-channel cross disking (below diversion) and overbank mowing to maintain active channel and unobstructed view widths (50 acres)	LP-2	No	\$12,000	\$0

**Priority Area: Species Habitat****Item(s):** *Whooping Crane Grassland / Wet Meadow Habitat*

No.	Management Activities	Budget Line Item	Completed	Cost (Estimated)	Cost (Actual)
EC 3	Tract 2009002 Prescribed burn (35 ac)	LP-2	No	\$1,440	\$0
EC 4	Tract 2012002 Prescribed burn (143 ac)	LP-2	No	\$5,883	\$0

**Priority Area: Species Habitat****Item(s): Other Species of Concern**

No.	Management Activities	Budget Line Item	Completed	Cost (Estimated)	Cost (Actual)
EC 5	Habitat and species surveys on properties where work will occur	N/A	Yes	N/A	N/A
EC 6	Coordination with USFWS and NGPC to identify and mitigate potential impacts associated with land activities	N/A	Yes	N/A	N/A

**Priority Area: Operations and Maintenance****Item(s): Basic Property Maintenance Obligations and Needs**

No.	Management Activities	Budget Line Item	Completed	Cost (Estimated)	Cost (Actual)
EC7	Tract 2009002 building utilities and maintenance	LP-4	Yes	\$2,500	\$3,370
EC 8	Fence and road maintenance	LP-4	Yes	\$2,000	\$0
EC 9	Mowing	LP-4	Yes	\$3,000	\$1,395
EC 10	Noxious weed control	LP-4	Yes	\$10,000	\$5,421

**Priority Area: Operations and Maintenance****Item(s): Agricultural Operations**

No.	Management Activities	Budget Line Item	Completed	Cost (Estimated)	Cost (Actual)
EC 11	Tract 2009002 Crop oversight	N/A	Yes	N/A	N/A
EC 12	Tract 2009005 grazing lease oversight	N/A	Yes	N/A	N/A
EC 13	Tract 2012001 haying lease oversight	N/A	Yes	N/A	N/A
EC 14	Tract 2012002 grazing lease oversight	N/A	Yes	N/A	N/A

## 2021 Elm Creek Complex Budget Summary

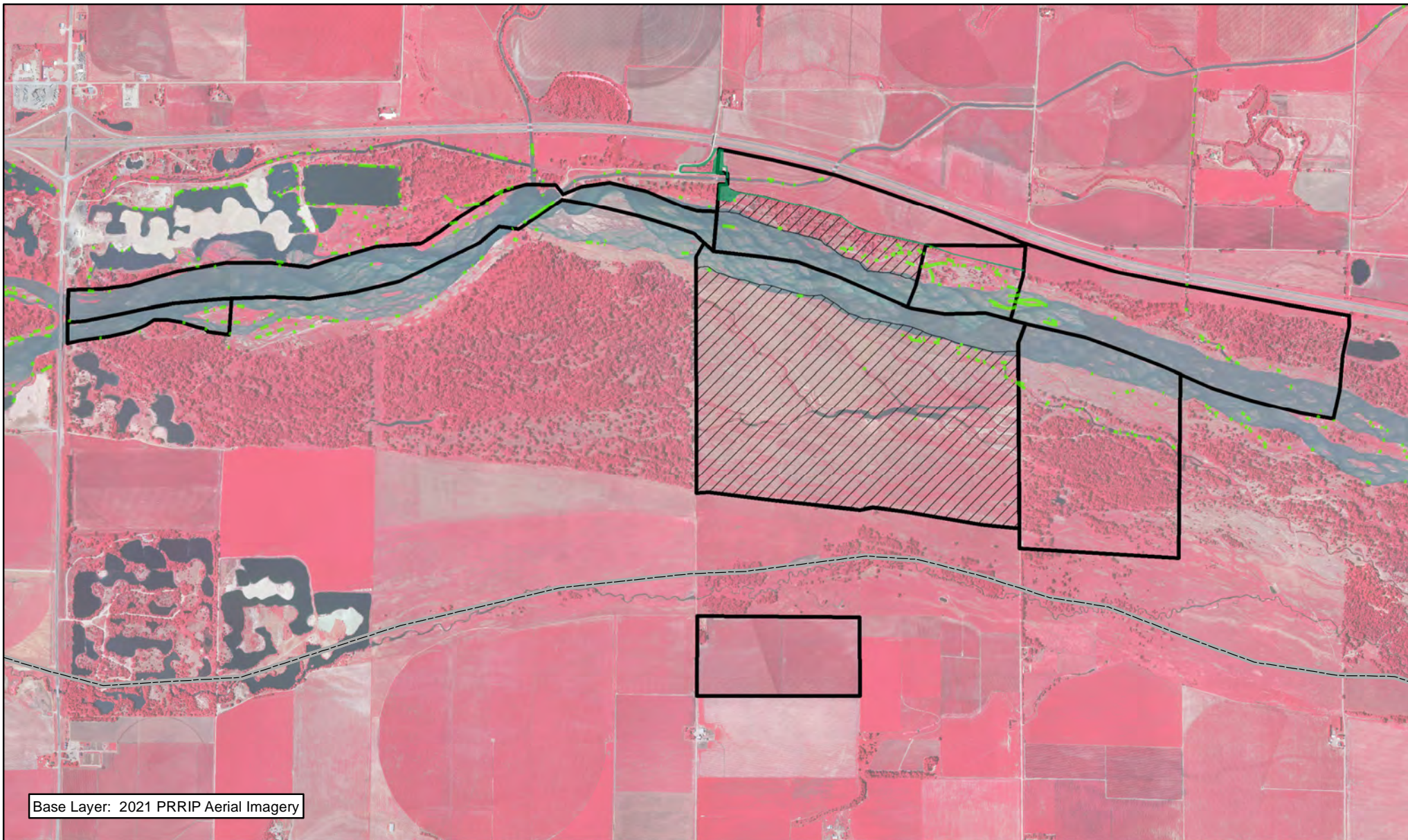
### 2021 Expenditures by Program Budget Line Item

Priority Area	Item	Budget Line Item	Estimated Expenditure	Actual Expenditure
Species Habitat	Target Species Sand and Water Habitat	LP-2	\$12,000	\$0
Species Habitat	Whooping Crane Wet Meadow/ Grassland Habitat	LP-2	\$7,323	\$0
		<b>Subtotal</b>	<b>\$19,323</b>	<b>\$0</b>
Operations and Maintenance	Property Maintenance and Agricultural Operations	LP-4	\$17,500	\$10,186
		<b>Total</b>	<b>\$36,823</b>	<b>\$10,186</b>

### 2021 Revenues

Tract	Item	Estimated Income	Actual Income
Tract 2009002	Crop Income	\$4,350	\$4,350
Tract 2009005	Grazing Income	\$3,500	\$3,500
Tract 2012001	Haying Income	\$2,000	\$2,532
Tract 2012002	Grazing Income	\$8,100	\$6,075
		<b>Total</b>	<b>\$17,950</b>
			<b>\$16,457</b>










Base Layer: 2021 PRRIP Aerial Imagery



#### Legend

-  County
-  PVWMA Phrag Control
-  Noxious Weed Control
-  Shredding/Mowing



 Miles

1

#### ELM CREEK COMPLEX FY 2021 ACTIVITIES

Date: 02/04/2022  
By: TRT

Figure 10

# 2021 Jerry F. Kenny Pawnee Complex Annual Work Plan Report

## General Priorities

- \* **Good Neighbor Policy** - Conducted all actions in accordance with Program's good neighbor policy.

## Adaptive Management Priorities

- \* **Species Monitoring** – Monitored whooping crane use of in-channel roosting habitat.

## Species Habitat Priorities

- \* **Maintain Target Species Sand and Water Habitat** – Controlled in-channel vegetation to maintain suitable unobstructed view widths for whooping cranes. Removed vegetation from overbank areas adjacent to the channel to promote channel widening through lateral erosion.
- \* **Protecting Other Species of Concern** – Identified presence of and determine methods to protect other species of concern during implementation of land-related activities.

## Operations and Maintenance Priorities

- \* **Basic Property Maintenance Obligations and Needs** – Fulfilled basic property ownership obligations and needs on Tracts 2014002 and 2015002.
- \* **Agricultural Operations** – Oversight of grazing/ haying leases on Tracts 2014002 and 2015002.

*NOTE: The budget section of this work plan only contains information for work items that are specific to these tracts. As such, tract-specific research and monitoring actions are presented but system-scale actions like target species and geomorphology/vegetation monitoring are not.*

**Priority Area: General****Item(s):** *Complex Land Interest and Good Neighbor Policy*

No.	Management Activities	Budget Line Item	Completed	Cost (Estimated)	Cost (Actual)
PAW 1	Coordination of Program land actions with neighboring landowners	N/A	Yes	N/A	N/A

**Priority Area: Adaptive Management & Target Species Habitat****Item(s):** *Tern, Plover and Whooping Crane Riverine Habitat Experiments*

No.	Management Activities	Budget Line Item	Completed	Cost (Estimated)	Cost (Actual)
PAW 2	Herbicide treatment on south bank to kill vegetation prior to disking	LP-2	Yes	\$5,000	\$6,049
PAW 3	In-channel cross disking and overbank mowing to maintain active channel and unobstructed view widths (100 ac)	LP-2	No	\$22,500	\$0

**Priority Area: Species Habitat****Item(s):** *Whooping Crane Grassland / Wet Meadow Habitat*

No.	Management Activities	Budget Line Item	Completed	Cost (Estimated)	Cost (Actual)
PAW 4	Tract 2014002 Prescribed burn (42 ac)	LP-2	No	\$1,728	\$0
PAW 5	Tract 2015002 Prescribed burn (8 ac)	LP-2	No	\$329	\$0

**Priority Area: Species Habitat****Item(s):** *Other Species of Concern*

No.	Management Activities	Budget Line Item	Completed	Cost (Estimated)	Cost (Actual)
PAW 6	Habitat and species surveys on properties where work will occur	N/A	Yes	N/A	N/A
PAW 7	Coordination with USFWS and NGPC to identify and mitigate potential impacts associated with land activities	N/A	Yes	N/A	N/A

**Priority Area: Operations and Maintenance****Item(s):** *Basic Property Maintenance Obligations and Needs*

No.	Management Activities	Budget Line Item	Completed	Cost (Estimated)	Cost (Actual)
PAW 8	Noxious weed control - (~675 acres)	LP-4	Yes	\$2,500	\$2,196
PAW 9	Fence and road maintenance	LP-4	Yes	\$2,000	\$325
PAW 10	NE Forest Service Cost share Pilot Fuel Reduction Project	LP-4	No	\$25,000	\$0

**Priority Area: Operations and Maintenance****Item(s):** *Agricultural Operations*

No.	Management Activities	Budget Line Item	Completed	Cost (Estimated)	Cost (Actual)
PAW 11	Tract 2014002 oversight	N/A	Yes	N/A	N/A
PAW 12	Tract 2015002 oversight	N/A	Yes	N/A	N/A



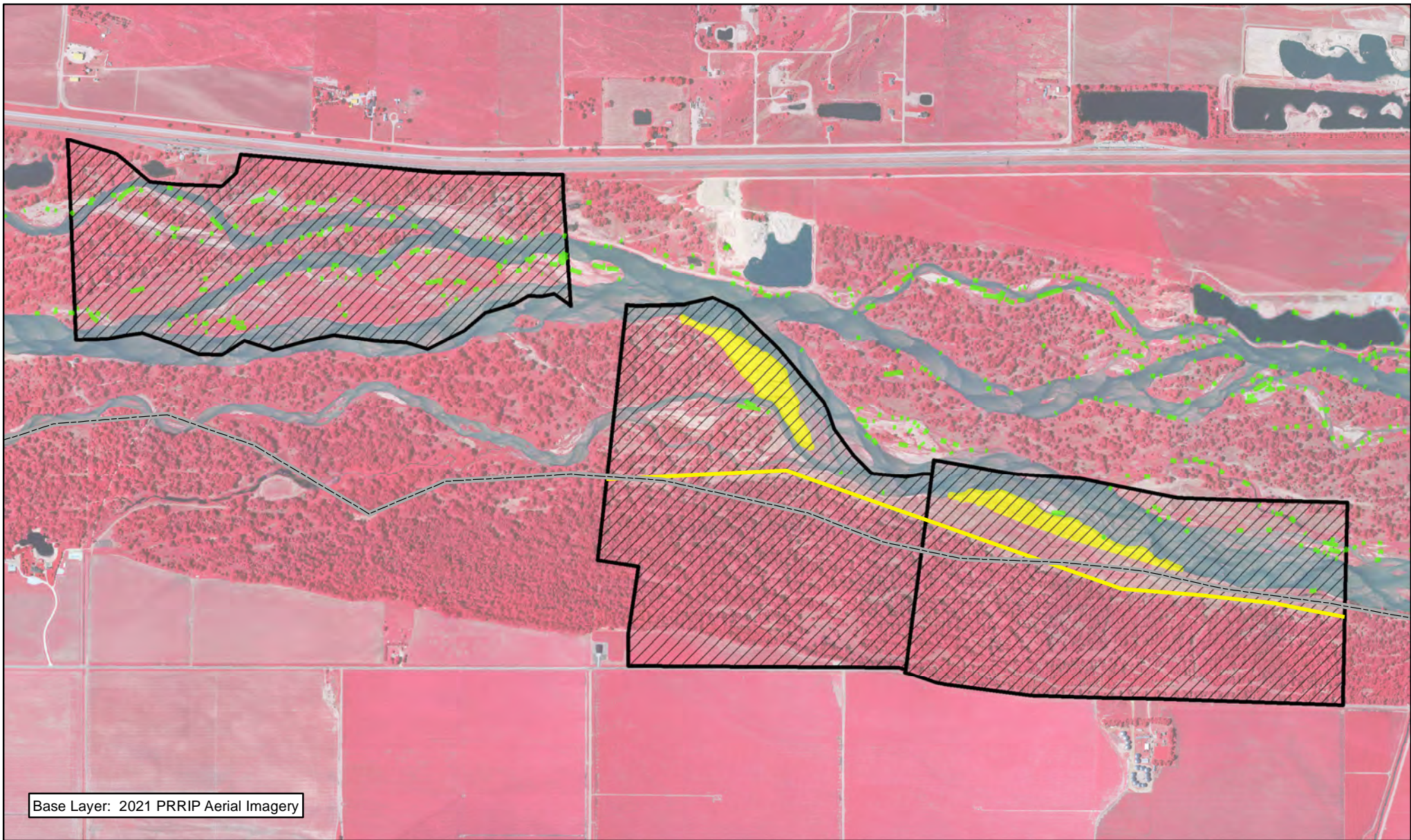
## 2021 Jerry F. Kenny Pawnee Complex Budget Summary

### 2021 Expenditures by Program Budget Line Item

Priority Area	Item	Budget Line Item	Estimated Expenditure	Actual Expenditure
Adaptive Management & Species Habitat	Target Species Sand and Water Habitat	LP-2	\$27,500	\$6,049
Species Habitat	Whooping Crane Grassland / Wet Meadow Habitat	LP-2	\$2,057	\$0
		<b>Subtotal</b>	<b>\$29,557</b>	<b>\$6,049</b>
Operations and Maintenance	Property Maintenance and Agricultural Operations	LP-4	\$29,500	\$2,521
		<b>Total</b>	<b>\$59,057</b>	<b>\$8,570</b>

### 2021 Revenues





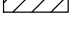
Tract	Item	Estimated Income	Actual Income
Tract 2015002	Crop Income	\$585	\$585
Tract 2015002	Grazing Income	\$0	\$1,594
Tract 2014002	Grazing Income	\$0	\$1,594
<b>Total</b>		<b>\$585</b>	<b>\$3,773</b>




Base Layer: 2021 PRRIP Aerial Imagery



### Legend

-  County
-  High Tensile Fence
-  Preemergent
-  PVWMA Phrag Control
-  Noxious Weed Control



 Miles  
0.5

JERRY F. KENNY  
PAWNEE COMPLEX  
FY 2021 ACTIVITIES

Date: 02/04/2022  
By: TRT

Figure 11

# 2021 Fort Kearny Complex Annual Work Plan Report

## General Priorities

- \* **Good Neighbor Policy** - Conducted all actions in accordance with Program's good neighbor policy.

## Adaptive Management Priorities

- \* **Species Monitoring** – Monitored whooping crane use of off-channel palustrine wetlands and in-channel roosting habitat.

## Species Habitat Priorities

- \* **Maintain Target Species Sand and Water Habitat** – Controlled in-channel vegetation to maintain suitable unobstructed view widths for whooping cranes. Removed vegetation from overbank areas adjacent to the channel to promote channel widening through lateral erosion.
- \* **Protecting Other Species of Concern** – Identified presence of and determine methods to protect other species of concern during implementation of land-related activities.

## Operations and Maintenance Priorities

- \* **Basic Property Maintenance Obligations and Needs** – Fulfilled basic property ownership obligations and needs on Tracts 2008001, 2009001, 2009004, 2010003, 2012003 and 2015001 including fence and road maintenance and noxious weed control.
- \* **Agricultural Operations** – Oversight of grazing/haying leases on Tracts 2008001, 2012003, 2009001, 2009004, and 2015001.

*NOTE: The budget section of this work plan only contains information for work items that are specific to these tracts. As such, tract-specific research and monitoring actions are presented but system-scale actions like target species and geomorphology/vegetation monitoring are not.*

**Priority Area: General****Item(s):** *Complex Land Interest and Good Neighbor Policy*

No.	Management Activities	Budget Line Item	Completed	Cost (Estimated)	Cost (Actual)
FK 1	Coordination of Program land actions with neighboring landowners	Annual	Yes	N/A	N/A

**Priority Area: Species Habitat****Item(s):** *Improve Target Species Sand and Water Habitat*

No.	Management Activities	Budget Line Item	Completed	Cost (Estimated)	Cost (Actual)
FK 2	Disking if necessary to provide in-channel vegetation control (~83 ac)	LP-2	No	\$18,500	\$0
FK 3	Clear Island upstream of Hike/Bike Bridge on Main Channel (12.5 ac)	LP-2	Yes	\$15,000	\$12,725

**Priority Area: Species Habitat****Item(s):** *Whooping Crane Grassland / Wet Meadow Habitat*

No.	Management Activities	Budget Line Item	Completed	Cost (Estimated)	Cost (Actual)
FK 4	Tract 2009001 Annual electrical service fee at irrigation well to supplement water to wetland & cost to replace pump motor & control panel from lightening strike	LP-2	Yes	\$5,400	\$11,676
FK 5	Tract 2009004- Prescribe burn (225 ac)	LP-2	No	\$9,257	\$0
FK 6	Tract 2015001 NE unit Prescribe burn (55 ac)	LP-2	No	\$2,263	\$0



**Priority Area: Species Habitat****Item(s):** *Other Species of Concern*

No.	Management Activities	Budget Line Item	Completed	Cost (Estimated)	Cost (Actual)
FK 7	Habitat and species surveys on properties where work will occur	N/A	Yes	N/A	N/A
FK 8	Coordination with USFWS and NGPC to identify and mitigate potential impacts associated with land activities	N/A	Yes	N/A	N/A

**Priority Area: Operations and Maintenance****Item(s):** *Basic Property Maintenance Obligations and Needs*

No.	Management Activities	Budget Line Item	Completed	Cost (Estimated)	Cost (Actual)
FK 9	Tract 2009004 & 2015001 Electricity	LP-4	Yes	\$650	\$1,057
FK 10	Noxious weed control	LP-4	Yes	\$10,000	\$13,358
FK 11	Fence and road maintenance	LP-4	Yes	\$4,500	\$9,254
FK 12	Mowing	LP-4	No	\$1,000	\$0

**Item(s):** *Agricultural Operations*

No.	Management Activities	Budget Line Item	Completed	Cost (Estimated)	Cost (Actual)
FK 13	Tract 2008001 grazing lease oversight	N/A	Yes	N/A	N/A
FK 14	Tract 2012003 grazing lease oversight	N/A	Yes	N/A	N/A
FK 15	Tract 2015001 grazing lease oversight	N/A	Yes	N/A	N/A

**Priority Area: Unplanned Expenses**

2009001	Phrag/ Cattail Spraying	Whooping Crane	LP-2	\$441
---------	-------------------------	----------------	------	-------

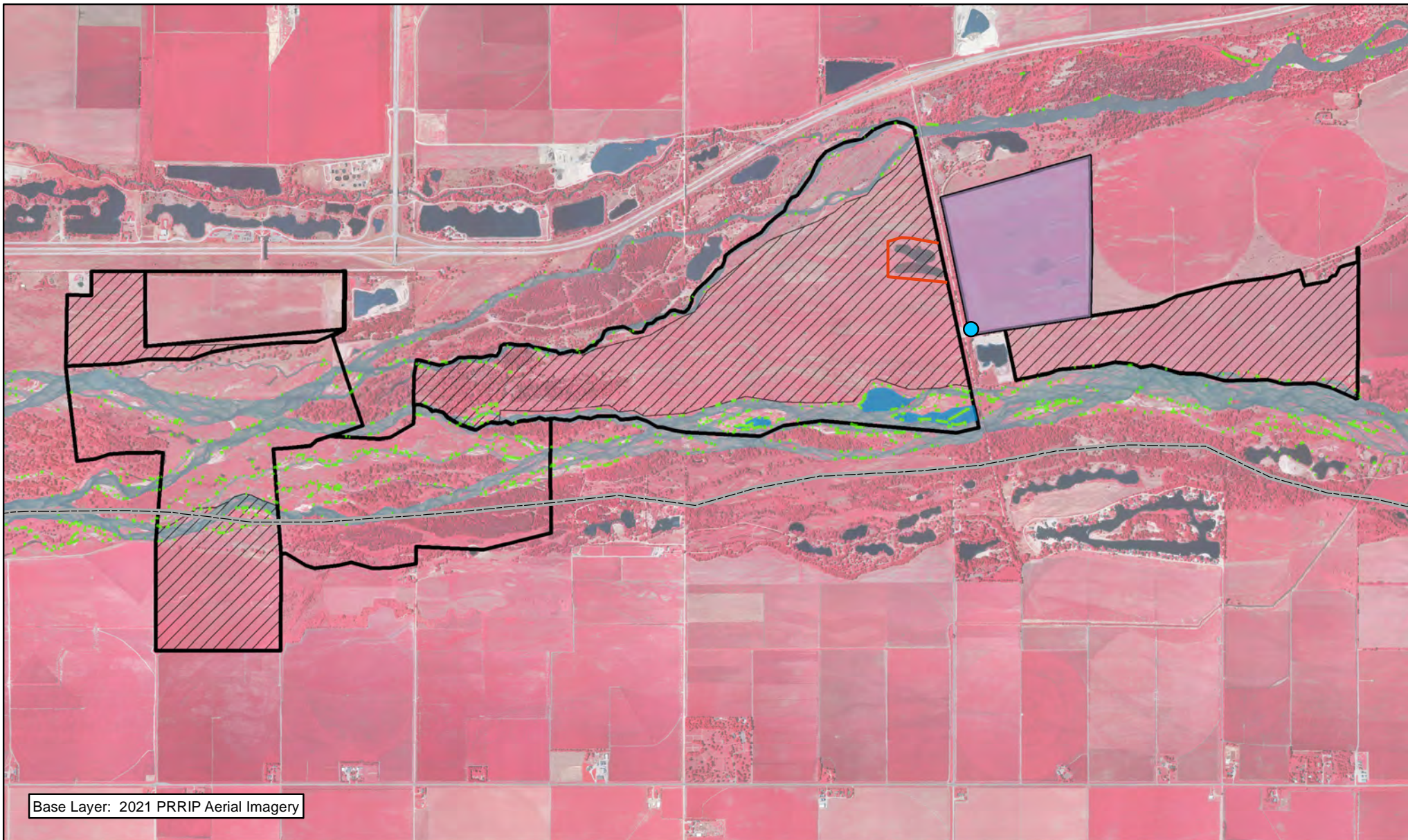
## 2021 Ft Kearny Complex Budget Summary

### 2021 Expenditures by Program Budget Line Item

Priority Area	Item	Budget Line Item	Estimated Expenditure	Actual Expenditure
Species Habitat	Improve Sand and Water Habitat	LP-2	\$33,500	\$12,725
Species Habitat	Whooping Crane Wet Meadow/ Grassland Habitat	LP-2	\$16,920	\$11,676
	Unplanned Expense	LP-2	0	\$441
		<b>Subtotal</b>	<b>\$50,420</b>	<b>\$24,842</b>
Operations and Maintenance	Property Maintenance and Agricultural Operations	LP-4	\$16,150	\$23,669
		<b>Total</b>	<b>\$66,570</b>	<b>\$48,511</b>

### 2021 Revenues

Tract	Item	Estimated Income	Actual Income
Tract 2008001 N & 2012003	Grazing Income	\$5,250	\$6,500
Tract 2008001 S	Haying Income	\$7,000	\$6,057
Tract 2009001	Grazing Income	\$0	\$0
Tract 2009004	Grazing Income	\$11,825	\$11,275
Tract 2012003	Cropland Income	\$1,800	\$1,800
Tract 2015001	Grazing Income	\$11,825	\$11,250
	<b>Total</b>	<b>\$37,700</b>	<b>\$36,882</b>



PLATTE RIVER  
RECOVERY IMPLEMENTATION PROGRAM

#### Legend

County

Brush Control

Tree Clearing

PVWMA Phrag Control

Noxious Weed Control

Barbwire Fence Construction

Well Repair



Miles

1

#### FT. KEARNY COMPLEX FY 2021 ACTIVITIES

Date: 02/04/2022

By: TRT

Figure 12

## 2021 Minden – Gibbon Management Agreement Annual Work Plan Report

### Adaptive Management Priorities

- \* **Species Monitoring** – Monitored whooping crane use of in-channel roosting habitat.

### Species Habitat Priorities

- \* **Maintain Target Species Sand and Water Habitat** – Controlled in-channel vegetation to maintain suitable unobstructed view widths for whooping cranes.

### Priority Area: Species Habitat

Item(s): *Improve Target Species Sand and Water Habitat*

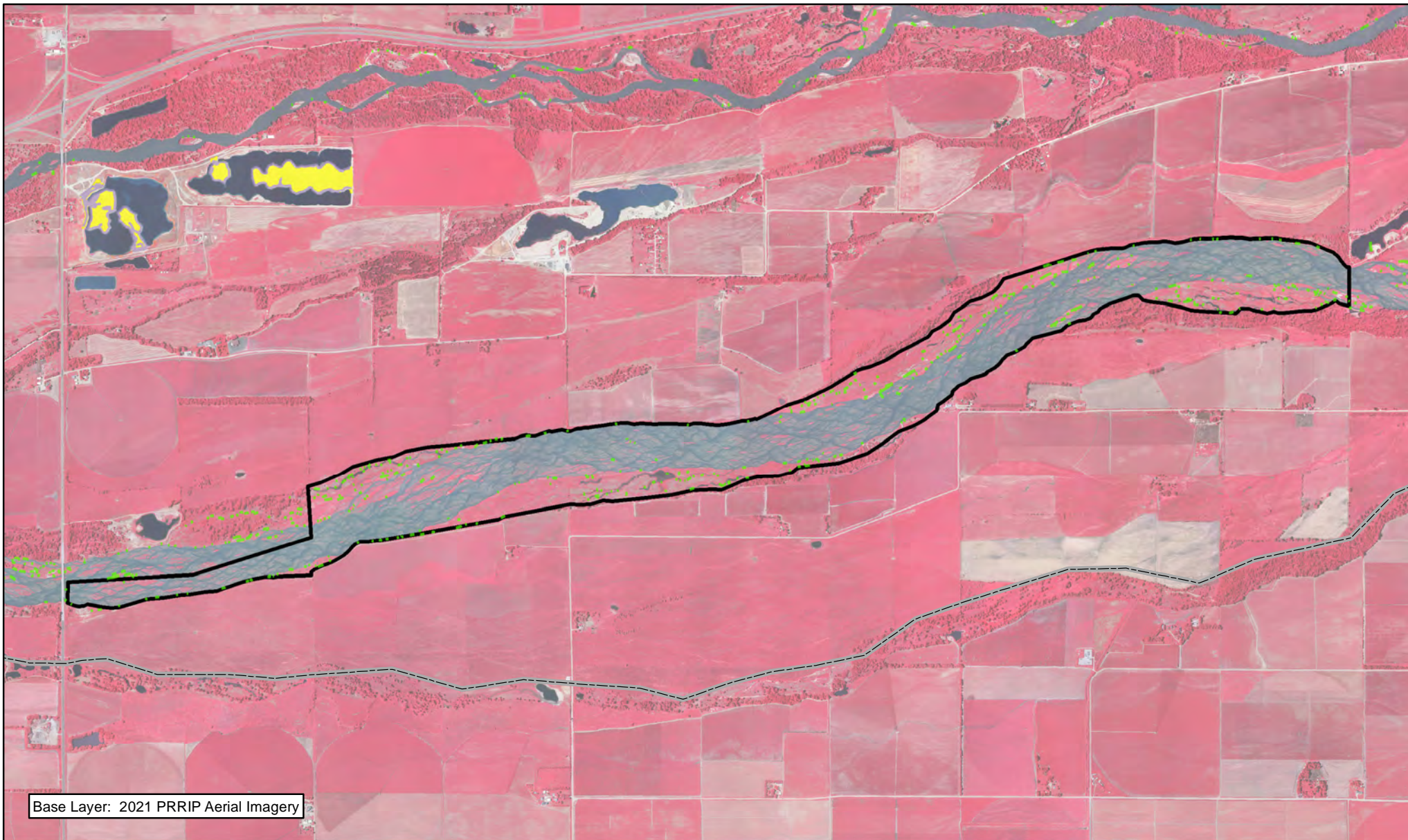
No.	Management Activities	Budget Line Item	Completed	Cost (Estimated)	Cost (Actual)
M-G 1	Disking if necessary to provide in-channel vegetation control (~80 ac)	LP-2	No	\$16,500	\$0
M-G 2	Brush, tree, cattail herbicide spraying	LP-2	Yes	\$6,000	\$3,346

## 2021 Minden-Gibbon Management Agreement Budget Summary

### 2021 Expenditures by Program Budget Line Item

Priority Area	Item	Budget Line Item	Estimated Expenditure	Actual Expenditure
Species Habitat	Improve Target Species Sand and Water Habitat	LP-2	\$22,500	\$3,346
		<b>Total</b>	<b>\$22,500</b>	<b>\$3,346</b>










Base Layer: 2021 PRRIP Aerial Imagery




PLATTE RIVER  
RECOVERY IMPLEMENTATION PROGRAM

### Legend

-  County
-  Brush Control
-  Herbicide
-  PVWMA Phrag Control
-  Preemergent



 Miles

1

### MINDEN-GIBBON COMPLEX FY 2021 ACTIVITIES

Date: 02/04/2022  
By: TRT

Figure 13

# 2021 Clark Island Complex Annual Work Plan Report

## General Priorities

- \* **Complex Land Interest** - Execution of management agreements with conservation and private landowners that will allow the Program to implement necessary construction, maintenance and research/monitoring activities were not completed.
- \* **Good Neighbor Policy** - Conducted all actions in accordance with Program's good neighbor policy.

## Adaptive Management Priorities

- \* **Whooping Crane Riverine Habitat** – Design and implement vegetation clearing to provide a range of unobstructed view widths above the Programs minimums
- \* **Species Monitoring** – Monitored whooping crane use of palustrine wetlands and in-channel roosting habitat.

## Species Habitat Priorities

- \* **Maintain Target Species Sand and Water Habitat** – Controlled in-channel vegetation to maintain suitable unobstructed view widths for whooping cranes.
- \* **Protecting Other Species of Concern** – Identified presence of and determine methods to protect other species of concern during implementation of land-related activities.

## Operations and Maintenance Priorities

- \* **Basic Property Maintenance Obligations and Needs** – Fulfilled basic property ownership obligations and needs on Tract 2018001 including fence and road maintenance and noxious weed control.
- \* **Agricultural Operations** – Oversight of cropland, grazing/ haying leases on Tract 2018001

NOTE: The budget section of this work plan only contains information for work items that are specific to these tracts. As such, tract-specific research and monitoring actions are presented but system-scale actions like target species and geomorphology/vegetation monitoring are not.

**Priority Area: General****Item(s):** *Complex Land Interest and Complex-Level Planning*

No.	Management Activities	Budget Line Item	Completed	Cost (Estimated)	Cost (Actual)
CI 1	Execution of management agreements w/ other private landowners for in-channel research and habitat construction activities	N/A	No	N/A	N/A
CI 2	Coordination of Program land actions with neighboring landowners	N/A	Yes	N/A	N/A

**Priority Area: Species Habitat****Item(s):** *Improve Target Species Sand and Water Habitat*

No.	Management Activities	Budget Line Item	Completed	Cost (Estimated)	Cost (Actual)
CI 3	Clear Trees & Burn, Bury on Islands of neighboring properties pending mgmt	LP-2	No	\$30,000	\$0
CI 4	Disking if necessary to provide in-channel vegetation control (~90 ac)	LP-2	No	\$20,100	\$0

**Priority Area: Species Habitat****Item(s):** *Whooping Crane Grassland / Wet Meadow Habitat*

No.	Management Activities	Budget Line Item	Completed	Cost (Estimated)	Cost (Actual)
CI 5	Tract 2018001 Russian Olive & Tree Pile Removal	LP-2	No	\$15,000	\$0
CI 6	Tract 2018001 Prescribe burn (157 ac)	LP-2	No	\$6,459	\$0

**Priority Area: Species Habitat**  
**Item(s):** *Other Species of Concern*

No.	Management Activities	Budget Line Item	Completed	Cost (Estimated)	Cost (Actual)
CI 7	Habitat and species surveys on properties where work will occur	N/A	Yes	N/A	N/A
CI 8	Coordination with USFWS and NGPC to identify and mitigate potential impacts associated with land activities	N/A	Yes	N/A	N/A

**Priority Area: Operations and Maintenance**  
**Item(s):** *Basic Property Maintenance Obligations and Needs*

No.	Management Activities	Budget Line Item	Completed	Cost (Estimated)	Cost (Actual)
CI 9	Fence and road maintenance	LP-4	Yes	\$10,000	\$14,806
CI 10	Noxious weed control	LP-4	Yes	\$2,000	\$1,564
CI 11	Mowing	LP-4	No	\$1,500	\$0

**Priority Area: Operations and Maintenance**  
**Item(s):** *Agricultural Operations*

No.	Management Activities	Budget Line Item	Completed	Cost (Estimated)	Cost (Actual)
CI 12	Tract 2018001 grazing & haying lease oversight	N/A	Yes	N/A	N/A

**Priority Area: Unplanned Expenses**

2018001	Building Demo/ Removal	Whooping Crane	LP-2	\$8,250
2018001	Island Pre-emergent Application	Whooping Crane	LP-2	\$10,929
2018001	Brush/ Phrag/ Purple Loosestrif Spraying	Whooping Crane	LP-2	\$3,954



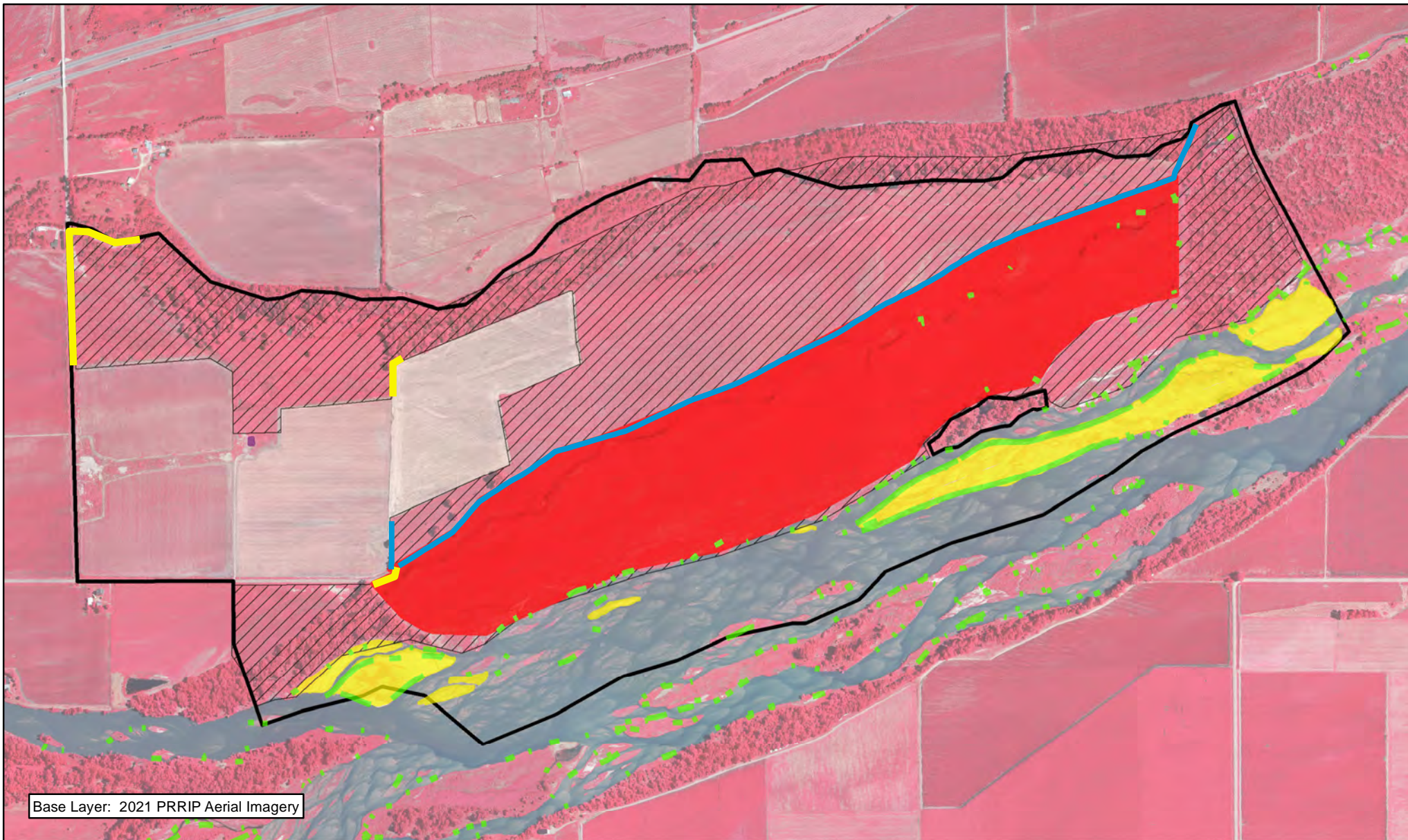
## 2021 Clark Island Complex Budget Summary

### 2021 Expenditures by Program Budget Line Item

Priority Area	Item	Budget Line Item	Estimated Expenditure	Actual Expenditure
Species Habitat	Improve Target Species Sand and Water Habitat	LP-2	\$50,100	\$0
Species Habitat	Whooping Crane Wet Meadow/ Grassland Habitat	LP-2	\$21,459	\$0
	Unplanned Expense	LP-2	0	\$23,133
		<b>Subtotal</b>	<b>\$71,559</b>	<b>\$23,133</b>
Operations and Maintenance	Property Maintenance and Agricultural Operations	LP-4	\$13,500	\$16,370
		<b>Total</b>	<b>\$85,059</b>	<b>\$39,503</b>

### 2021 Revenues

Tract	Item	Estimated Income	Actual Income
Tract 2018001	Meadow Grazing Income	\$7,150	\$7,150
Tract 2018001	Accretion Grazing Income	\$6,000	\$6,820
Tract 2018001	Cropland Cash Rent Income	\$19,140	\$26,210
	<b>Total</b>	<b>\$32,290</b>	<b>\$40,180</b>



#### Legend

- |                             |                      |
|-----------------------------|----------------------|
| County                      | Building Removal     |
| Fence Repair                | Brush Control        |
| Barbwire Fence Construction | Noxious Weed Control |
| Preemergent                 | PVWMA Phrag Control  |



Miles

#### CLARK ISLAND COMPLEX FY 2021 ACTIVITIES

Date: 02/04/2022  
By: TRT

Figure 14

# 2021 Shoemaker Island Complex Annual Work Plan Report

## General Priorities

- \* **Good Neighbor Policy** - Conducted all actions in accordance with Program's good neighbor policy.

## Adaptive Management Priorities

- \* **Species Monitoring** – Monitored whooping crane use of palustrine wetlands and in-channel roosting habitat.

## Species Habitat Priorities

- \* **Maintain Target Species Sand and Water Habitat** – Controlled in-channel vegetation to maintain suitable unobstructed view widths for whooping cranes.
- \* **Protecting Other Species of Concern** – Identified presence of and determine methods to protect other species of concern during implementation of land-related activities.

## Operations and Maintenance Priorities

- \* **Basic Property Maintenance Obligations and Needs** – Fulfilled basic property ownership obligations and needs on Tract 2010004 including fence and road maintenance and noxious weed control.
- \* **Agricultural Operations** – Oversight of grazing/ haying leases on Tract 2010004

NOTE: The budget section of this work plan only contains information for work items that are specific to these tracts. As such, tract-specific research and monitoring actions are presented but system-scale actions like target species and geomorphology/vegetation monitoring are not.

**Priority Area: General****Item(s):** *Complex Land Interest and Complex-Level Planning*

No.	Management Activities	Budget Line Item	Completed	Cost (Estimated)	Cost (Actual)
SI 1	Coordination of Program land actions with neighboring landowners	N/A	Yes	N/A	N/A

**Priority Area: Species Habitat****Item(s):** *Improve Target Species Sand and Water Habitat*

No.	Management Activities	Budget Line Item	Completed	Cost (Estimated)	Cost (Actual)
SI 2	Disking if necessary to provide in-channel vegetation control (~75 ac)	LP-2	No	\$16,750	\$0

**Priority Area: Species Habitat****Item(s):** *Whooping Crane Grassland / Wet Meadow Habitat*

No.	Management Activities	Budget Line Item	Completed	Cost (Estimated)	Cost (Actual)
SI 3	Tract 2010004-South Meadow Prescribe burn (57 ac)	LP-2	No	\$2,345	\$0



**Priority Area: Species Habitat****Item(s):** *Other Species of Concern*

No.	Management Activities	Budget Line Item	Completed	Cost (Estimated)	Cost (Actual)
SI 4	Habitat and species surveys on properties where work will occur	N/A	Yes	N/A	N/A
SI 5	Coordination with USFWS and NGPC to identify and mitigate potential impacts associated with land activities	N/A	Yes	N/A	N/A

**Priority Area: Operations and Maintenance****Item(s):** *Basic Property Maintenance Obligations and Needs*

No.	Management Activities	Budget Line Item	Completed	Cost (Estimated)	Cost (Actual)
SI 6	Fence and road maintenance	LP-4	Yes	\$1,500	\$142
SI 7	Noxious weed control	LP-4	Yes	\$2,500	\$1,994
SI 8	Mowing	LP-4	No	\$1,500	\$0
SI 9	Tract2010004 Electricity	LP-4	Yes	\$200	\$218

**Priority Area: Operations and Maintenance****Item(s):** *Agricultural Operations*

No.	Management Activities	Budget Line Item	Completed	Cost (Estimated)	Cost (Actual)
SI 10	Tract 2010004 grazing & haying lease oversight	N/A	Yes	N/A	N/A

## 2021 Shoemaker Island Complex Budget Summary

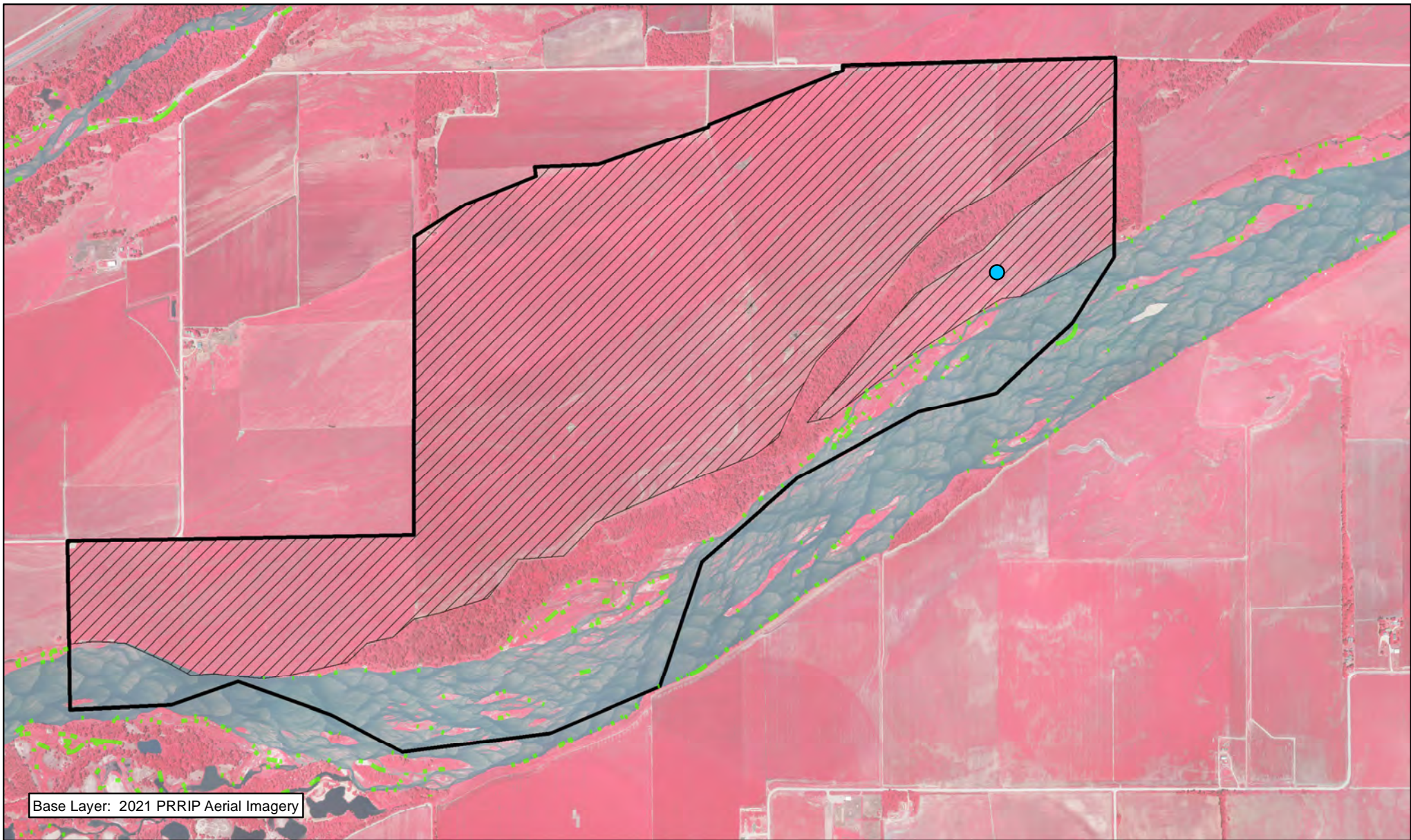
### 2021 Expenditures by Program Budget Line Item

Priority Area	Item	Budget Line Item	Estimated Expenditure	Actual Expenditure
Species Habitat	Improve Target Species Sand and Water Habitat	LP-2	\$16,750	\$0
Species Habitat	Whooping Crane Wet Meadow/ Grassland Habitat	LP-2	\$2,345	\$0
<b>Subtotal</b>			<b>\$19,095</b>	<b>\$0</b>

Operations and Maintenance	Property Maintenance and Agricultural Operations	LP-4	\$5,700	\$2,354
<b>Total</b>			<b>\$24,795</b>	<b>\$2,354</b>

### 2021 Revenues

Tract	Item	Estimated Income	Actual Income
Tract 2010004	Grazing & Haying Income	\$42,595	\$44,697
<b>Total</b>		<b>\$42,595</b>	<b>\$44,697</b>



### Legend

- County
- Solar Livestock Water Repair
- PVWMA Phrag Control
- Noxious Weed Control



1 Miles

### SHOEMAKER ISLAND COMPLEX FY 2021 ACTIVITIES

Date: 02/04/2022  
By: TRT

Figure 15

## 2021 Chapman Complex Annual Work Plan Report

### General Priorities

- \* **Restoration and Management Planning** – Development of restoration and management plan for Chapman Complex was not completed. Management Plans for 2019001 & 2020001 were completed.
- \* **Complex Land Interest** - Execution management agreements with conservation and private landowners that will allow the Program to implement necessary construction, maintenance and research/monitoring activities were not completed.
- \* **Good Neighbor Policy** - Conducted all actions in accordance with Program's good neighbor policy.

### Adaptive Management Priorities

- \* **Whooping Crane Riverine Habitat** – Design and implement vegetation clearing to provide a range of unobstructed view widths above the Programs minimums
- \* **Species Monitoring** – Monitored whooping crane use of palustrine wetlands and in-channel roosting habitat.

### Species Habitat Priorities

- \* **Improve Target Species Sand and Water Habitat** – Controlled in-channel vegetation to maintain suitable unobstructed view widths for whooping cranes.
- \* **Protecting Other Species of Concern** – Identified presence of and determine methods to protect other species of concern during implementation of land-related activities.

### Operations and Maintenance Priorities

- \* **Basic Property Maintenance Obligations and Needs** – Fulfilled basic property ownership obligations and needs on Tracts including fence and road maintenance and noxious weed control.
- \* **Agricultural Operations** – Oversight of grazing/ haying leases

NOTE: The budget section of this work plan only contains information for work items that are specific to these tracts. As such, tract-specific research and monitoring actions are presented but system-scale actions like target species and geomorphology/vegetation monitoring are not.



**Priority Area: General****Item(s):** *Complex Land Interest and Complex-Level Planning*

No.	Management Activities	Budget Line Item	Completed	Cost (Estimated)	Cost (Actual)
CC 1	Restoration and Management Planning for Chapman Complex	N/A	Yes	N/A	N/A
CC 2	Execution of management agreements w/ other private landowners for in-channel research and habitat construction activities	N/A	No	N/A	N/A
CC 3	Coordination of Program land actions with neighboring landowners	N/A	Yes	N/A	N/A

**Priority Area: Species Habitat****Item(s):** *Improve Target Species Sand and Water Habitat*

No.	Management Activities	Budget Line Item	Completed	Cost (Estimated)	Cost (Actual)
CC 4	Tract 2019001 Habitat Enhancement	LP-2	Yes	\$50,000	\$37,500
CC 5	Tract 2020001 Habitat Enhancement	LP-2	Yes	\$222,000	\$261,058

**Priority Area: Species Habitat**  
**Item(s):** *Other Species of Concern*

No.	Management Activities	Budget Line Item	Completed	Cost (Estimated)	Cost (Actual)
CC 6	Habitat and species surveys on properties where work will occur	N/A	Yes	N/A	N/A
CC 7	Coordination with USFWS and NGPC to identify and mitigate potential impacts associated with land activities	N/A	Yes	N/A	N/A

**Priority Area: Operations and Maintenance**  
**Item(s):** *Basic Property Maintenance Obligations and Needs*

No.	Management Activities	Budget Line Item	Completed	Cost (Estimated)	Cost (Actual)
CC 8	Fence and road maintenance	LP-4	Yes	\$15,000	\$18,834
CC 9	Noxious weed control	LP-4	No	\$5,000	\$0
CC 10	Mowing	LP-4	Yes	\$1,500	\$413

**Priority Area: Operations and Maintenance**  
**Item(s):** *Agricultural Operations*

No.	Management Activities	Budget Line Item	Completed	Cost (Estimated)	Cost (Actual)
CC 11	Tract 2019001 grazing lease oversight	N/A	Yes	N/A	N/A

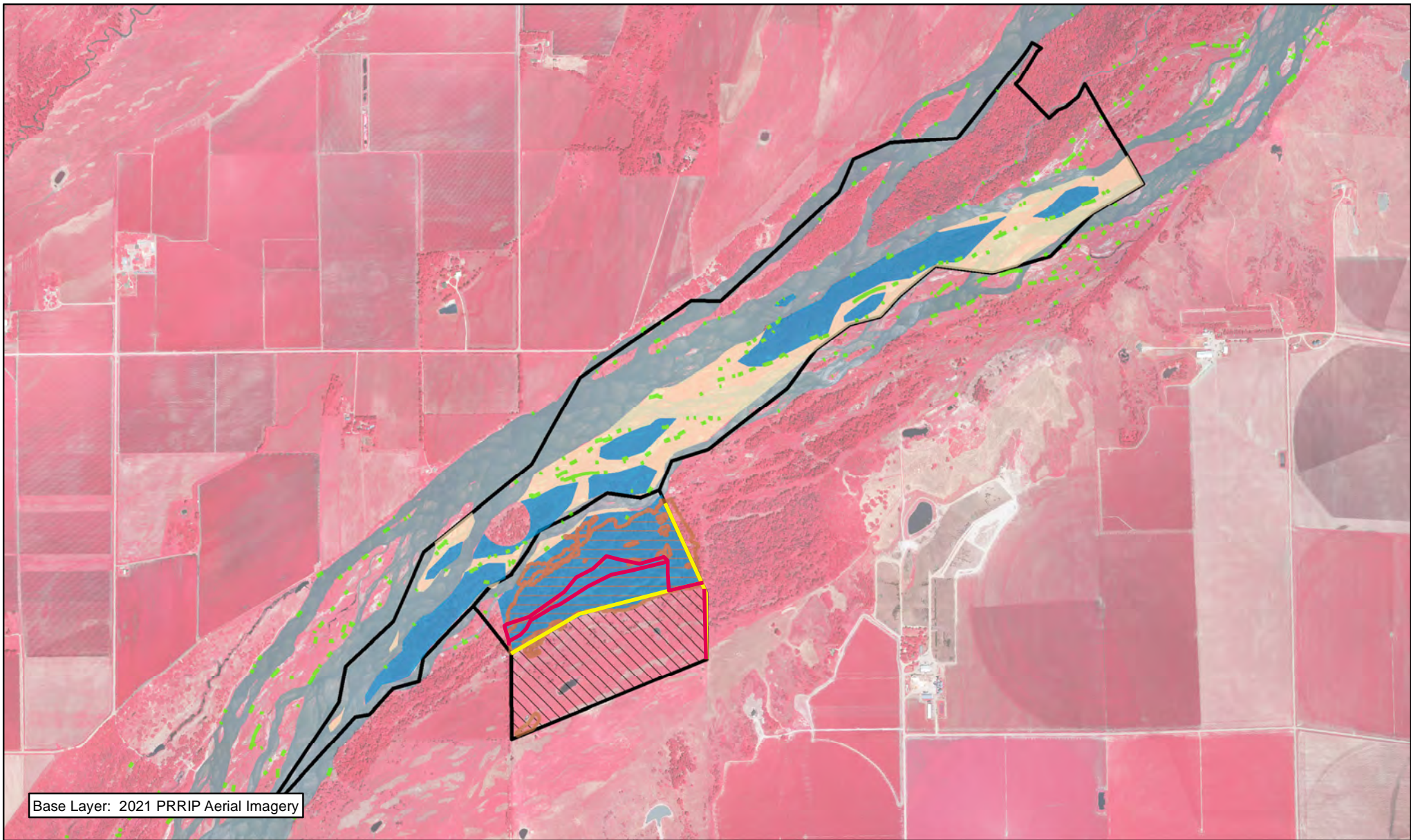
## 2021 Chapman Complex Budget Summary

### 2021 Expenditures by Program Budget Line Item

Priority Area	Item	Budget Line Item	Estimated Expenditure	Actual Expenditure
Species Habitat	Create In-channel Sand & Water Habitat	LP-2	\$272,000	\$298,558
			<b>\$272,000</b>	<b>\$298,558</b>
Operations and Maintenance	Property Maintenance and Agricultural Operations	LP-4	\$21,500	\$19,247
		<b>Total</b>	<b>\$293,500</b>	<b>\$317,805</b>

### 2021 Revenues





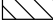


Tract	Item	Estimated Income	Actual Income
2019001	Grazing lease	\$3,640	\$1,820
	<b>Total</b>	<b>\$3,640</b>	<b>\$1,820</b>



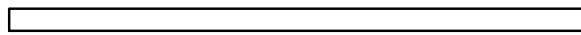
Base Layer: 2021 PRRIP Aerial Imagery



### Legend

-  HD/LE Native Seeding
-  Clear & Grub/ Burn & Bury
-  PVWMA Phrag Control
-  Double Disking
-  Aboveground Tree Clearing
-  Fence Removal
-  Barbwire Fence Construction



 Miles

1

## CHAPMAN COMPLEX FY 2021 ACTIVITIES

Date: 02/04/2022  
By: TRT

Figure 15



## 2021 Water Properties Annual Work Plan Report

### General Priorities

- \* **Good Neighbor Policy** - Conducted all actions in accordance with Program's good neighbor policy.

### Operations and Maintenance Priorities

- \* **Basic Property Maintenance Obligations and Needs** – Fulfilled basic property ownership obligations and needs on Tracts W2016001, W2016002, W2017001, & W2017002 including fence and road maintenance, irrigation management and noxious weed control.
- \* **Agricultural Operations** – Oversight of grazing/ haying lease on Tract W2016001 and custom farming on Tract W2016002

### Priority Area: General

**Item(s):** *Complex Land Interest and Complex-Level Planning*

No.	Management Activities	Budget Line Item	Completed	Cost (Estimated)	Cost (Actual)
WP 1	Coordination of Program land actions with neighboring landowners	N/A	Yes	N/A	N/A

### Priority Area: Operations and Maintenance

**Item(s):** *Basic Property Maintenance Obligations and Needs*

No.	Management Activities	Budget Line Item	Completed	Cost (Estimated)	Cost (Actual)
WP 2	Fence and road maintenance	WPLW-1	Yes	\$5,000	\$7,628
WP 3	Tract W201701 Boundary Fence	WPLW-1	Yes	\$13,200	\$7,148
WP 4	Noxious weed control	WPLW-1	No	\$10,000	\$0
WP 5	Mowing	WPLW-1	Yes	\$1,000	\$650
WP 6	Tracts W2016002 & W2017001 Electricity	WPLW-1	Yes	\$200	\$184
WP 7	Taxes	WPLW-1	Yes	\$9,000	\$9,753

## Priority Area: Operations and Maintenance

Item(s): *Agricultural Operations*

No.	Management Activities	Budget Line Item	Completed	Cost (Estimated)	Cost (Actual)
WP 8	TractW 2016002 Lease Oversight	WPLW-1	Yes	N/A	N/A

## Priority Area: *Unplanned Expenses*

2009007	Recharge well pump repair	Basic Property	LP-2	\$1,931
---------	---------------------------	----------------	------	---------

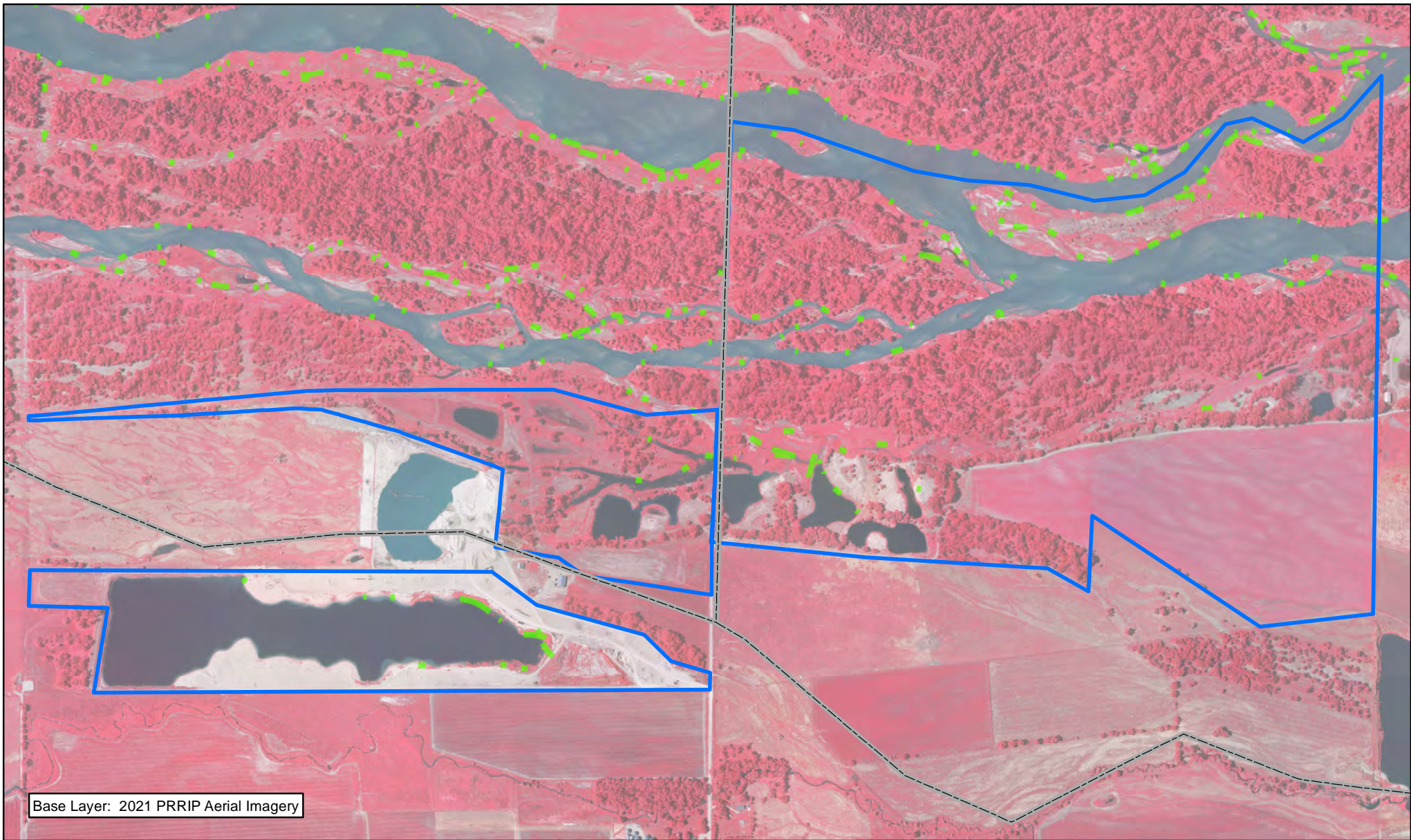
## 2021 Water Properties Budget Summary

### 2021 Expenditures by Program Budget Line Item

Priority Area	Item	Budget Line Item	Estimated Expenditure	Actual Expenditure
Operations and Maintenance	Property Maintenance and Agricultural Operations	WPLW-1	\$38,400	\$25,363
	Unplanned Expense	WPLW-1	0	\$1,931
		<b>Total</b>	<b>\$38,400</b>	<b>\$27,294</b>

## 2021 Revenues



Tract	Item	Estimated Income	Actual Income
Tract W201602	Crop Income	\$9,000	\$9,125
Tract W201701	N/A	\$0	\$0
Tract W201702	N/A	\$0	\$0
	<b>Total</b>	<b>\$9,000</b>	<b>\$9,125</b>




Base Layer: 2021 PRRIP Aerial Imagery



### Legend

-  County
-  PVWMA Phrag Control



 Miles  
0.5

### WATER TRACTS FY 2021 ACTIVITIES

Date: 02/04/2022  
By: TRT

Figure 17



**PLATTE RIVER**  
RECOVERY IMPLEMENTATION PROGRAM

Page Intentionally Left Blank